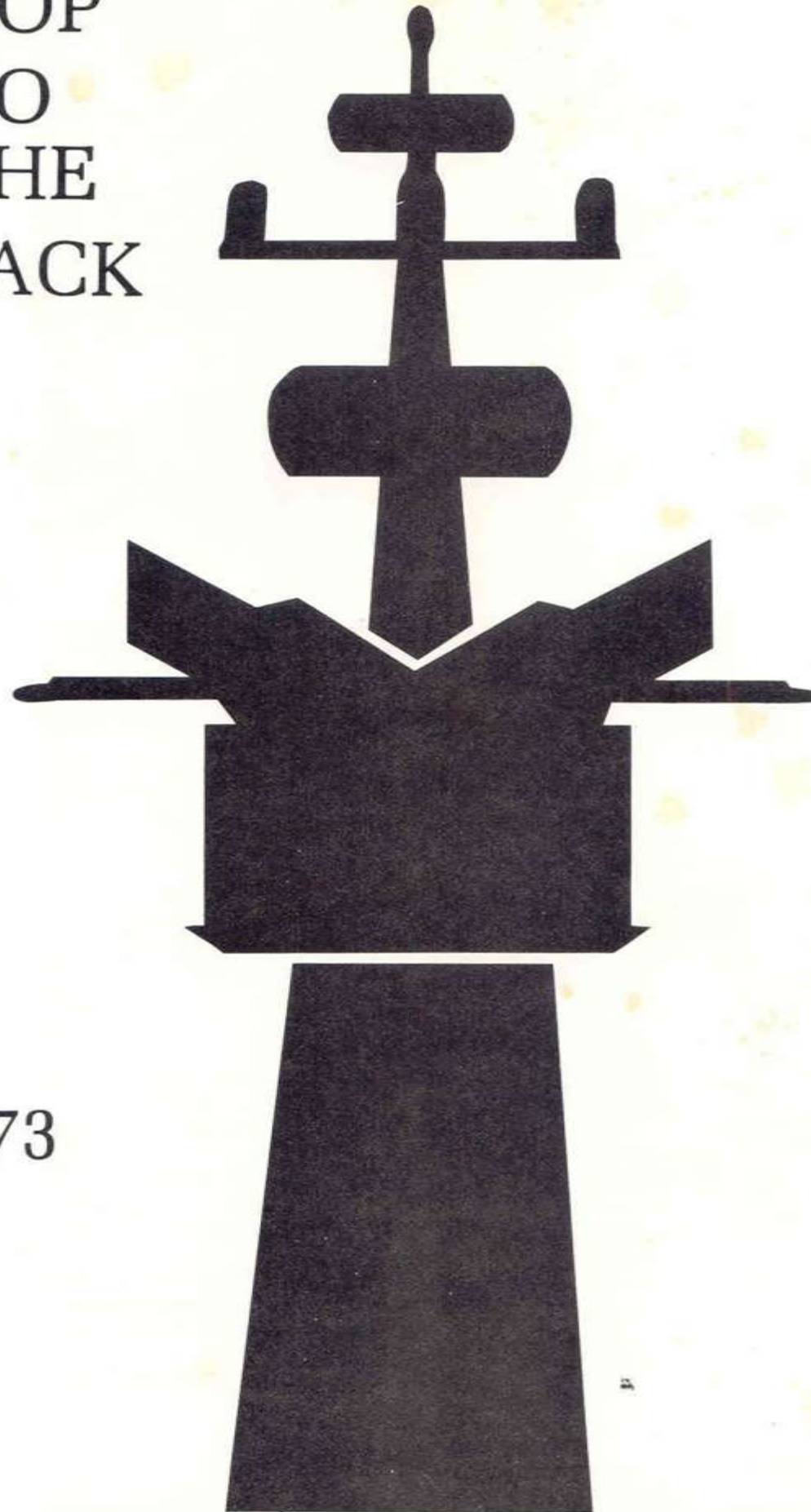


TOP
'O
THE
MACK

1973





COMMANDING OFFICER

Commander John F. Baumgardner, USN, was born in Coffey, Missouri and attended the University of Missouri where he was awarded the Degree of Bachelor of Science in Education and his commission in the U.S. Naval Reserve through the Naval Reserve Officers Training Program.

Commissioned an Ensign in June 1954, he subsequently served on **USS EPPING FOREST (LSD-4)** as Engineering Officer and First Lieutenant/Weapons Officer until December 1956, and as Operations Officer and Navigator of **USS GURKE (DD-783)** until December 1958. He was then assigned to the Operations Division, Staff, Commander in Chief U.S. Pacific Fleet.

Between November 1962 and August 1963, Commander Baumgardner served in the precommissioning detail for **USS WORDEN (DLG-18)** and on the commissioning was assigned as Operations Officer until July 1964. He then attended the U.S. Naval Postgraduate School at Monterey, California and was awarded a Masters Degree in Management in August 1965.

From Monterey, Commander Baumgardner joined **USS MAHAN (DLG-11)** for duty as Executive Officer, serving in that capacity until January 1967. He then served as Chief Staff Officer on Commander Destroyer Squadron 15 Staff, and in August 1968 was assigned to the Office of the Secretary of the Navy in the Office of Programs Appraisal.

From February 1969 to February 1970 he served in Vietnam with the U.S. Military Advisory Command with a Studies and Observation Group. He then served in the Plans Division, Staff, Commander in Chief Pacific until August 1971. Prior to reporting aboard **USS OUELLET (DE-1077)** he was assigned as Commanding Officer, **USS KEPPLER (DD-765)**.

Upon being relieved as Commander Officer **USS OUELLET (DE-1077)**, he reported to the Operations Staff, Commander in Chief, Pacific Fleet.



ROBERT M. WICKLUND
LIEUTENANT COMMANDER, USN
MAY 1972 TO OCTOBER 1973



ROBERT E. JOHANNESSEN
LIEUTENANT COMMANDER, USN
OCTOBER 1973 TO THE PRESENT

DEDICATION

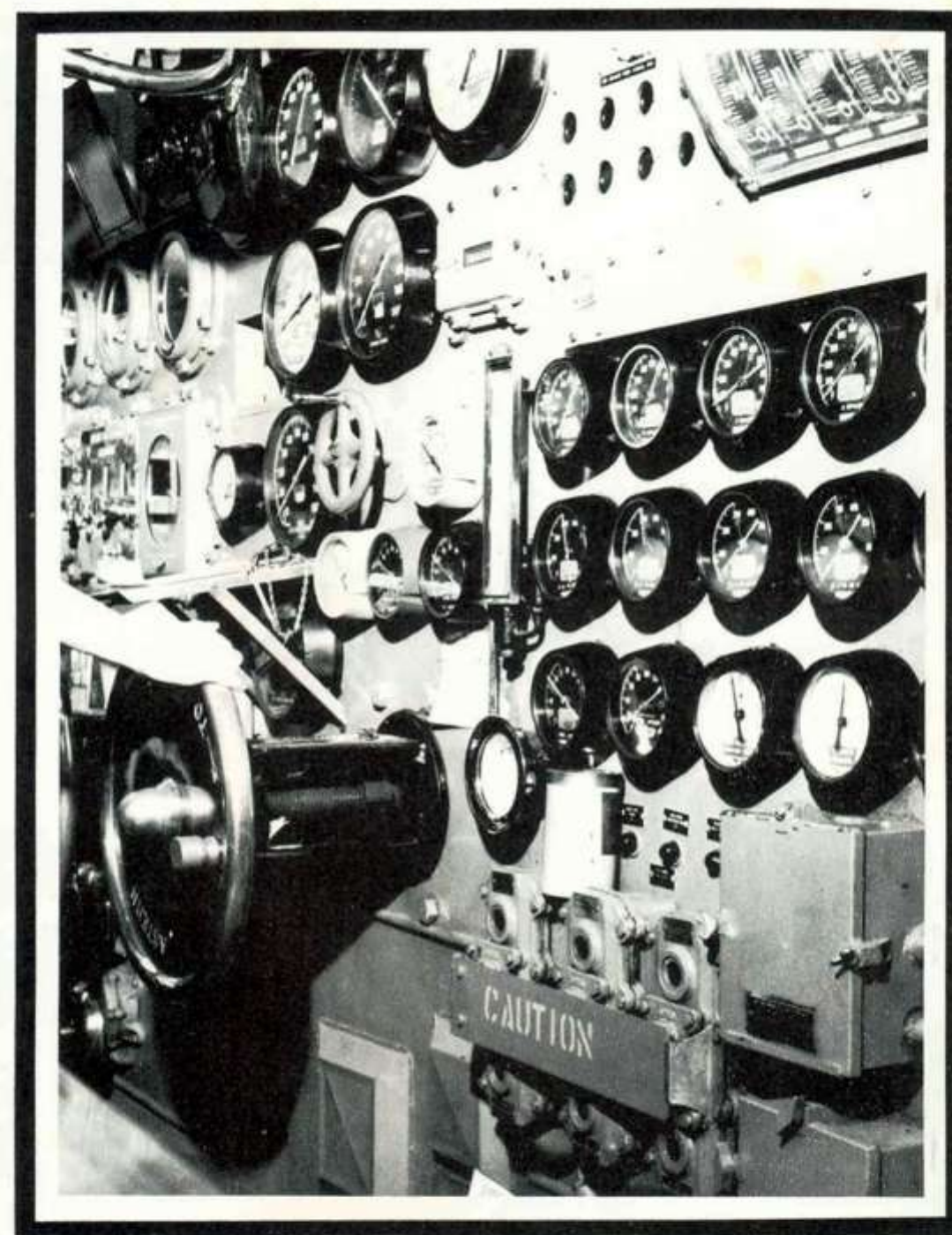
With the initiation of **Ouellet's** second western Pacific deployment, a long line of traditions continued, several others began and unknown ones yet linger in our future. It takes many men with their thoughts and ideas to support such traditions.

The men who enforce such traditions also enforce the policies of the United States, act as diplomats, and sometimes, even lifesavers. Behind these men and their motives lie their supporters. The reason for their being, their inspirations, their goals, and their enthusiasms are all of you back home. You are the wives, children, fiances, girlfriends, and friends: and these men are ourselves - the crewmembers of **OUELLET**.

It is your support and encouragement that provides us with fortitude to endure long periods of absense, many days at sea, demanding hours, and other adversities common to our task. For your unseen, but watchful eyes, smiles, prayers, and tolerant minds, we are truly grateful.

For this reason, and many others unmentioned, we offer the dedication of our second cruise book as a small token of our appreciation. With great gratitude and our warmest thoughts, we dedicate our second "Top of the Mack", all that it involves and means, to all of you.





ENGINEERING



LT. W. W. POSENECKER
ENGINEERING OFFICER



EMC GOMEZ



BTC MARLING



LTJG J. A. ZIMMER
DAMAGE CONTROL ASSISTANT



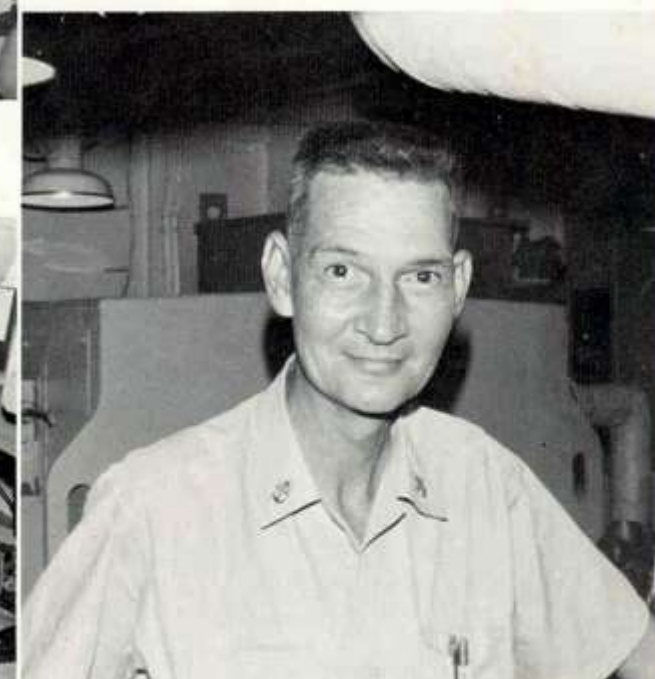
ENS. M. E. YATES
ELECTRICAL OFFICER



LTJG J. T. HAMMOND
MAIN PROPULSION ASSISTANT



BTC BRONNER



MMC MARSHALL



MM2 DESCLOS



MM3 WEATHERFORD



MMFN SCHEPPER



MMFA ROSS



MM3 WILLETT



FA FORD



MM3 MORTENSON



MM3 MOYER



EN3 BOND



MM3 KELLY



FA CALES



EN SCHULL



FN ROBINSON



FA PITTMAN



MMFN SUTHERLAND



MM1 PEATTIE



MM3 KELLY



MM2 ROBINSON



FN NELSON



FN KEIFFER



MM3 KEIFFER



FN AKIMSUE



BTFN ZIELGER



BTFN SHOEMAKER



BTFN NESTER



BTFN BUZZETTA



BT3 WALTON



BT2 ROGERS



IC3 AYERS



BT3 HURT



FA CARTER



MMFN TODD



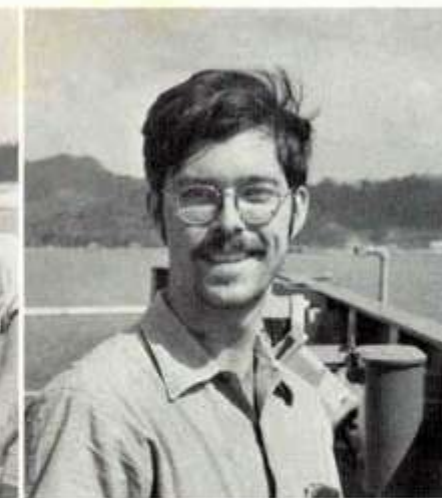
BT3 LEJUN



FN JONES



IC1 McCURLEY



ICFN MCCOSLIN



EM3 FEE



IC3 UCHIDA



ICFA CAIN



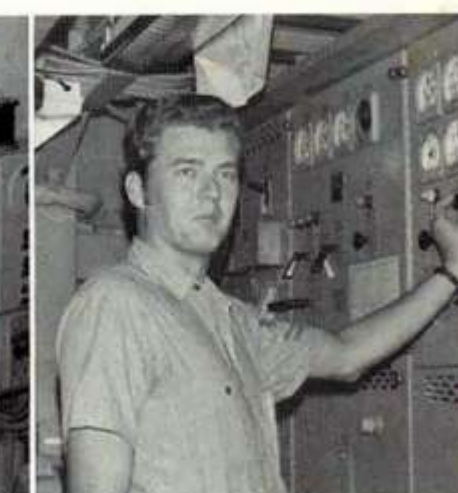
EMFA KRAFT



EM2 THOME



ICFA COURSON



IC2 ERRETT



HT1 IGNACIO



HT2 WICKER



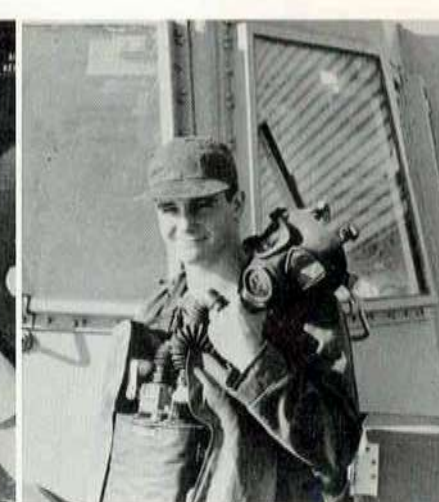
HT2 WILSON



MM3 LOWER



FN WULFF



EMFN ARTHAUD



EM2 GO



MR3 LAMB



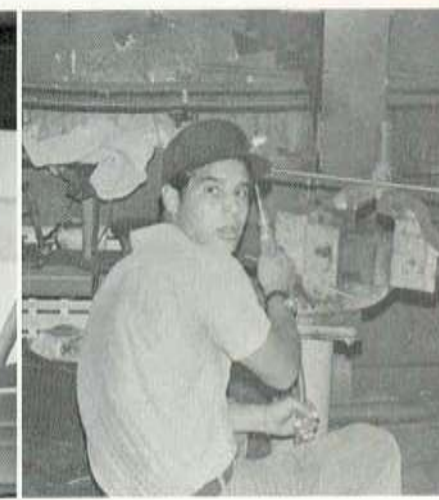
HT3 WEIKERT



ICFN UCHIDA



BT2 REN



HTFN SOUTHCOTT



HT3 SMITH



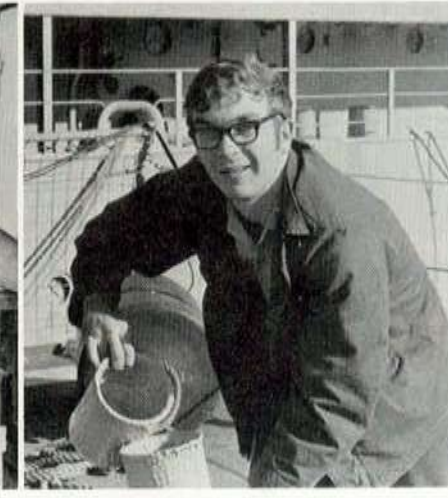
HTFA ATTERBERY



MR3 TURKAL



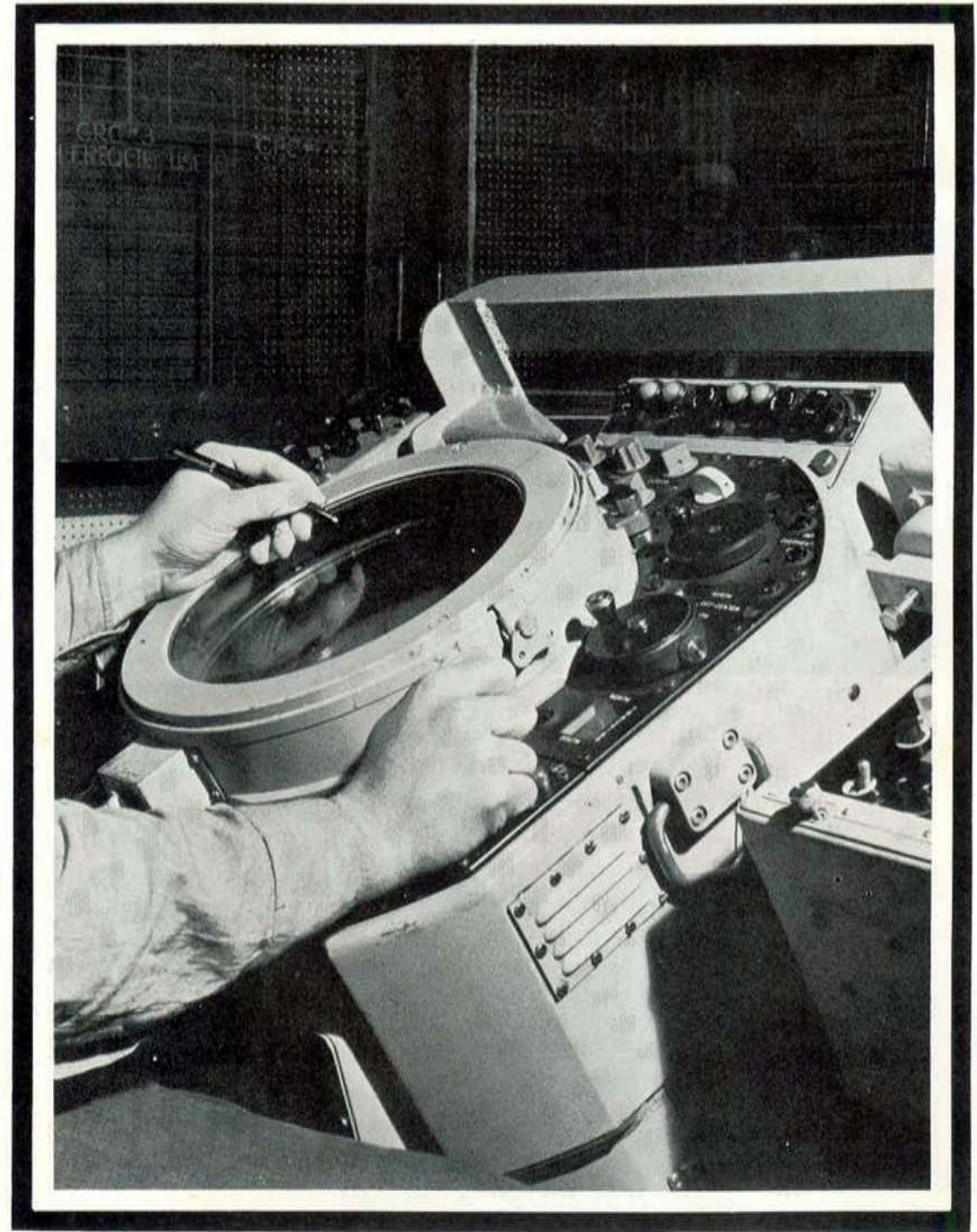
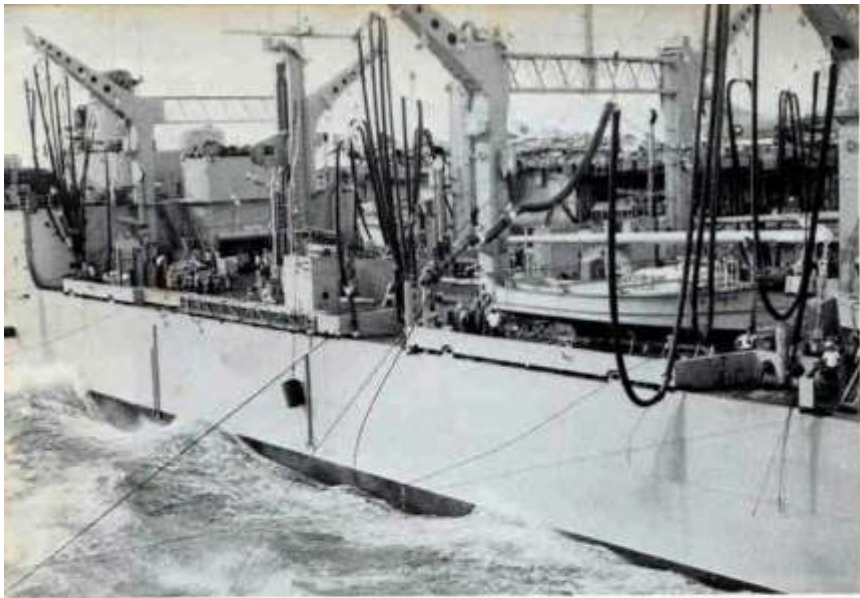
MR2 VENABLE



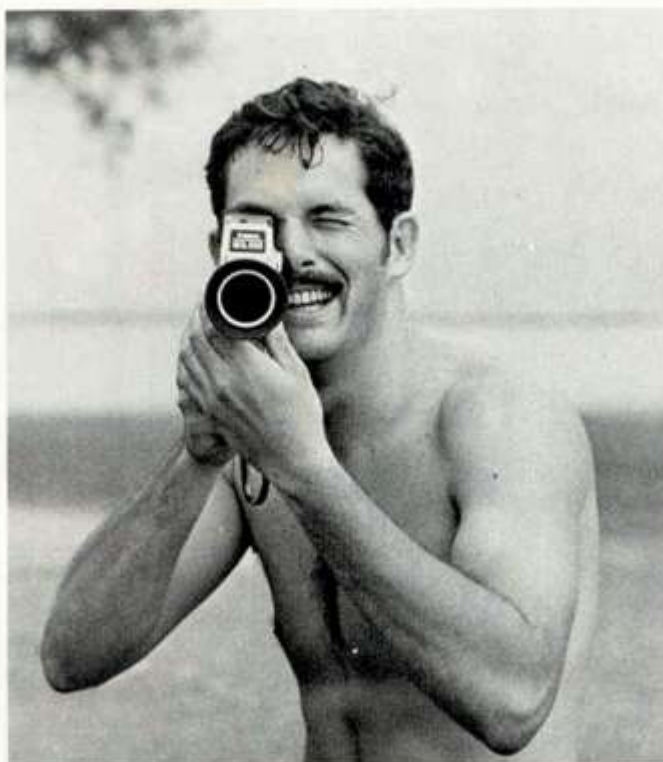
FN WALTHER



HTFN PRENDEBLE



OPERATIONS



LT. J. S. DOYLE
OPERATIONS OFFICER (PAST)



LT. D. F. RUSSELL
OPERATIONS OFFICER (PRESENT)



RMCS YANDOW



EWC SMITH



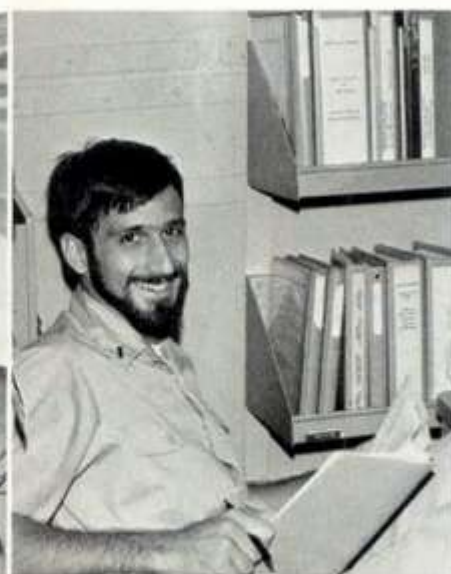
OSC HALLOWELL



LTJG R. A. DENSMORE
COMBAT INFORMATION
CENTER OFFICE



LTJG J. E. WIEGEL
COMMUNICATION OFFICER
(PRESENT)



ENS. M. B. CANDALOR
ELECTRONIC MATERIAL OFFICER



OSC PERLING



OS2 SMITH



SA RAIMEY



OS3 STROM



OSSN THRUMAN



OS3 RITCHIE



OS3 MULVEY



OS1 SIZELOVE



OS3 IWAI



EW STANFILL



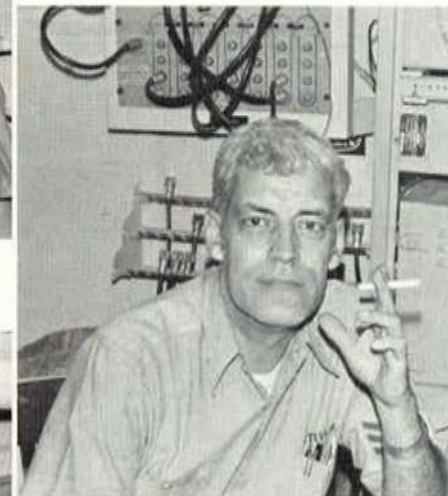
RM2 GROSSKORTENHAUS



RM3 ARRIES



RM3 STUBBLEFIELD



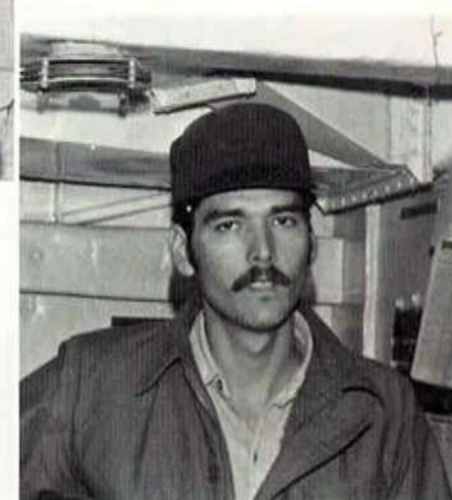
RM1 BARTELS



RMSN ADAMS



RM1 BAILEY



PC3 CASANOVA



RM3 GRAHAM



SMSN SALISBURY



SM1 SMITH



SMSN WALTZ



SMSN BESHARA



SMSN SARVIS



SM2 COX



SMSN CASIAS



ET1 COOPER



ETN2 MOORE



ETR3 UNDERWOOD



ETR2 BAER



ETR2 MOLE



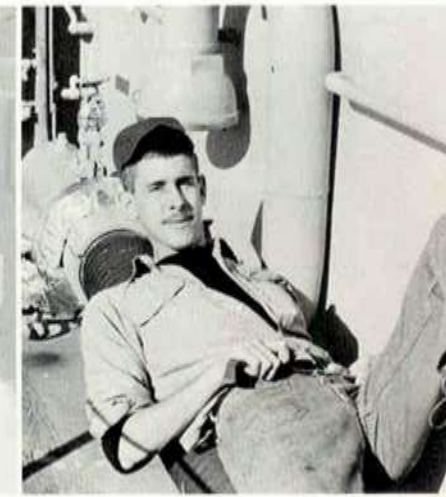
ETN2 KELLEY



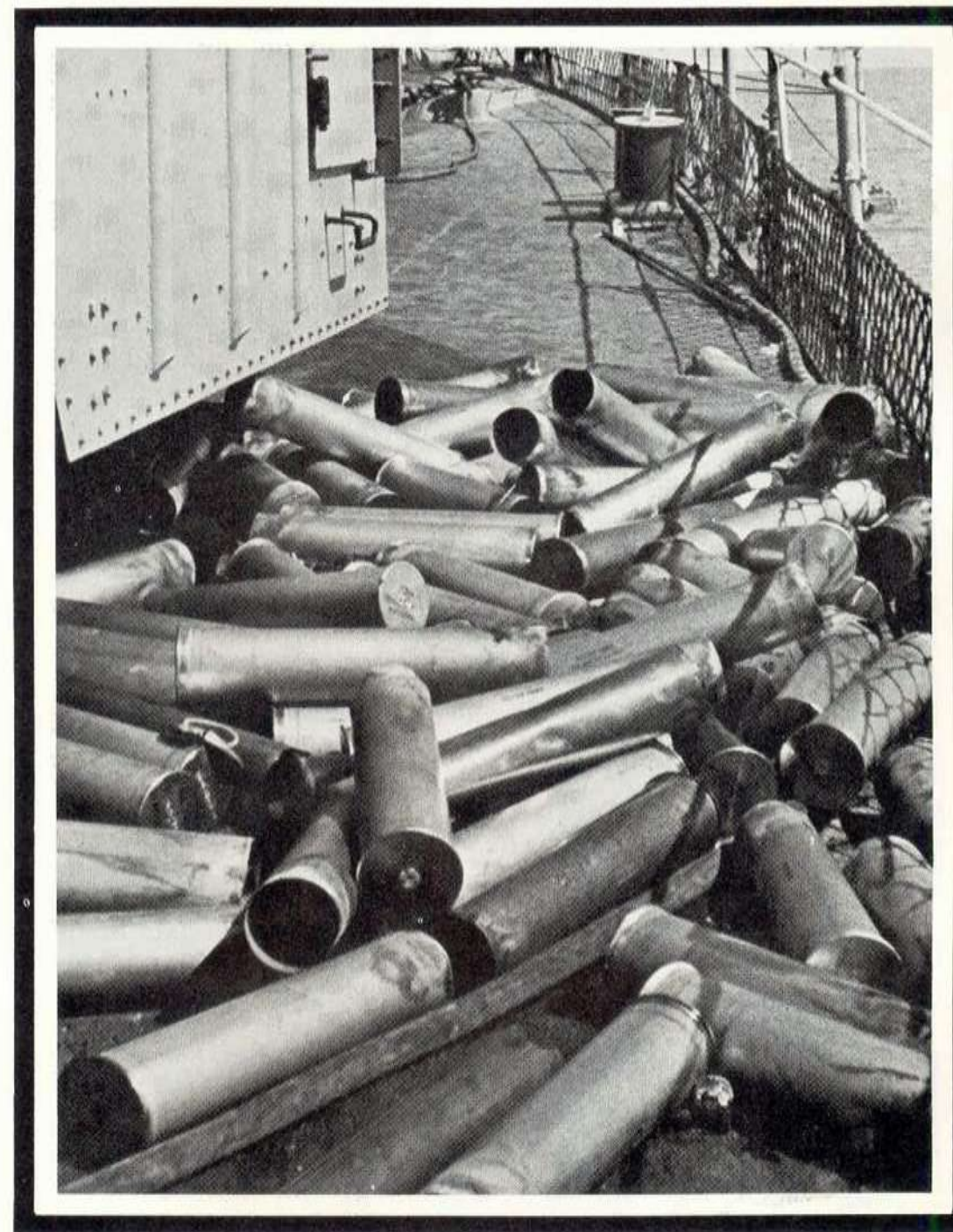
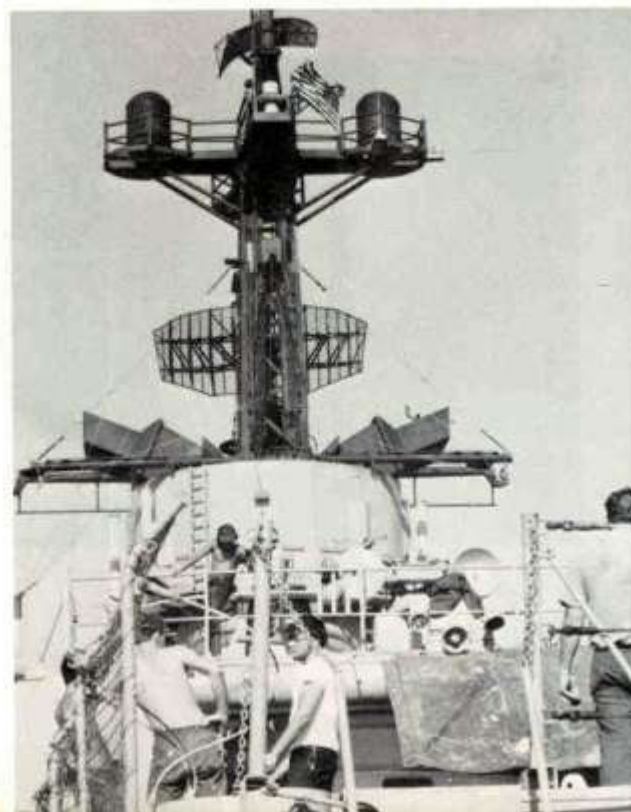
ETNSN BENGSTON



ETR3 CRANE



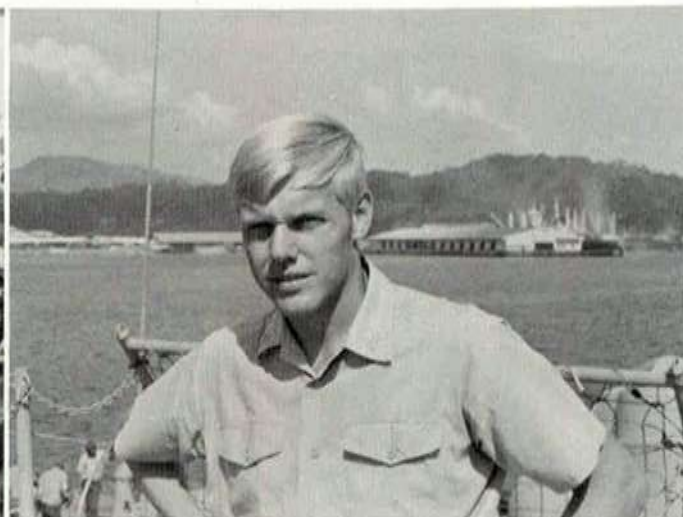
OSSN OLDBERG



WEAPONS



LT. P. H. EUBANK
PAST WEAPONS OFFICER



LT. D. C. LUNDAHL
PRESENT WEAPONS OFFICER



LTJG D. D. HENRY
ASW OFFICER



LTJG W. B. HEMPHILL
ASST. GUNNERY OFFICER



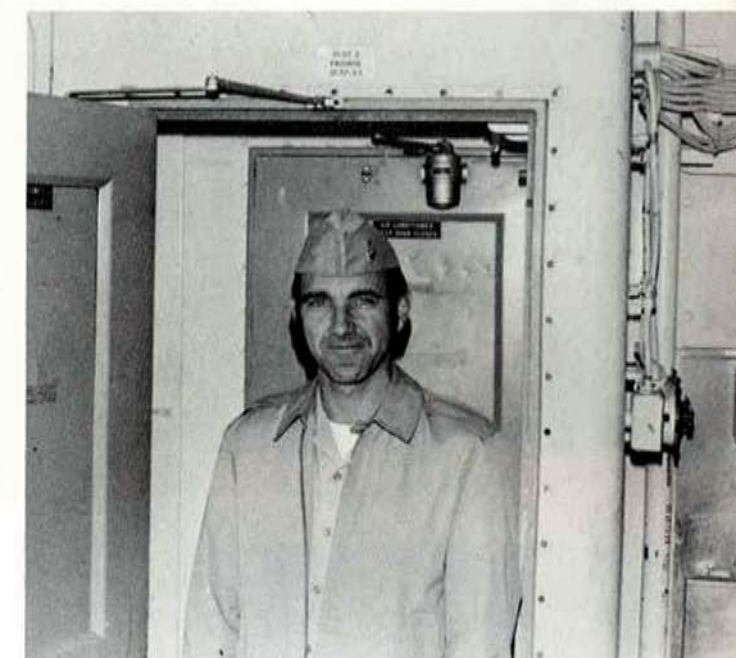
ENS. B. D. BROWN
FIRST LIEUTENANT



ENS D. J. MARESH
WEAPONS ADMIN OFFICER



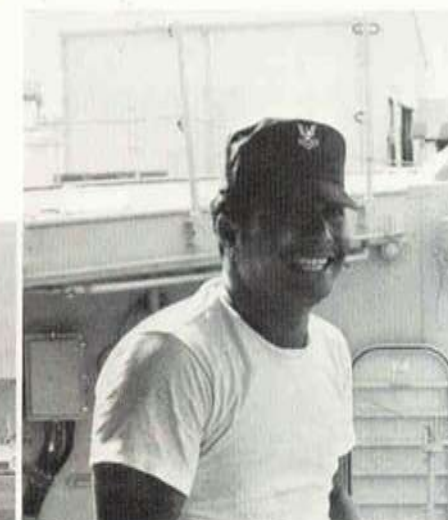
BMC ARMSTRONG



STC HOGAN



BM1 SILVA



BM2 LEO



BM2 TRIBBLE



SN YOUNG



SN NORTH



SA FRYAR



SA CHERRY



SA GREEN



SA IRIZARRY



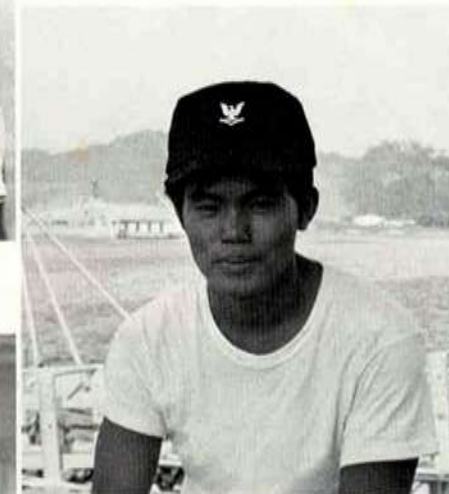
SA FELETI



SA BOHN



SN WILLIAMSON



BM3 ABE



SA GRIFFITH



SA HATTON



SA McCLELLAND



SN BELTRAN



SA SWIATEK



BM3 LOFTON



SA BURNS



BM3 ARNOLD



BM3 OKADA



SN GONZALES



SA SCHULTZ



BM3 LEBERNKNIGHT



SA DURBIN



SN LOCKE



SA EDWARDS



SA PAYNE



SA HARRIS



SA HATTON



STG3 MABLE



SN ECKMAN



SN HIXON



SA DULUDE



GMT1 CONE



STG3 HANSEN



GMTSN HOPP



ST1 LEWIS



SA SMOKA



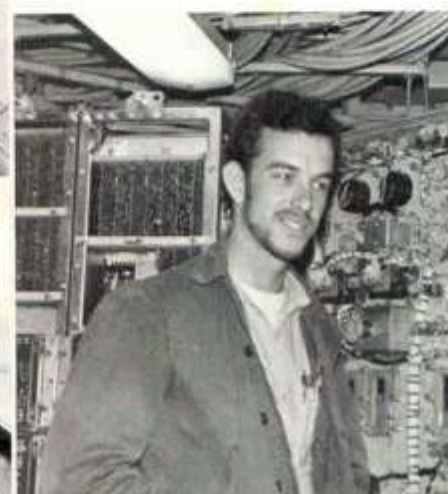
ST1 DILMORE



TM2 CLINE



STG3 CURRENT



STG3 BLEVINS



STG2 SEDGWICK



TMSA WILKINSON



SA LEMMON



SA SOTO



STG2 WILSON



GMG1 FOOL



GMG3 MACE



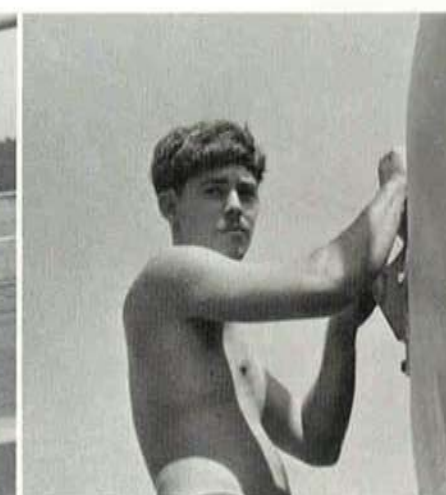
GMG2 FISH



GMGSN WALKER



SN SERVER



SN LOEFFLER



SN RICKS



FTGSN SEYFRIED



GMGSA GREEN



FTG3 TATE



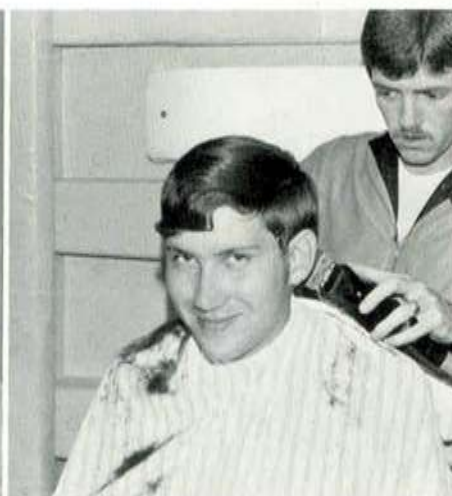
FTG3 CLINTON



FTMSA BERRYHILL



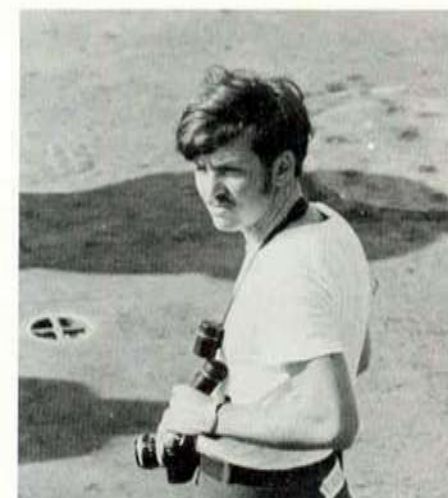
FTG3 McLAULIN



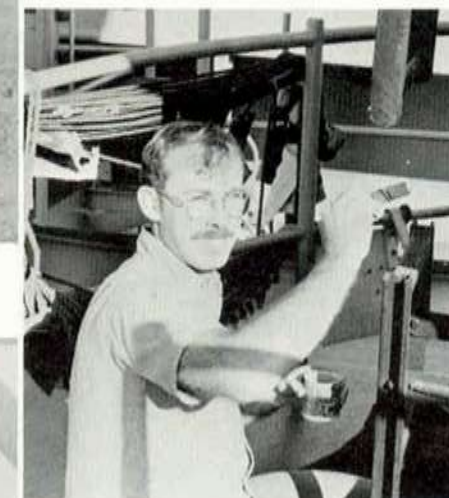
FTM2 STEIDLEY



SN PERRY



STG2 CONNELL



FTG2 MONTAGUE



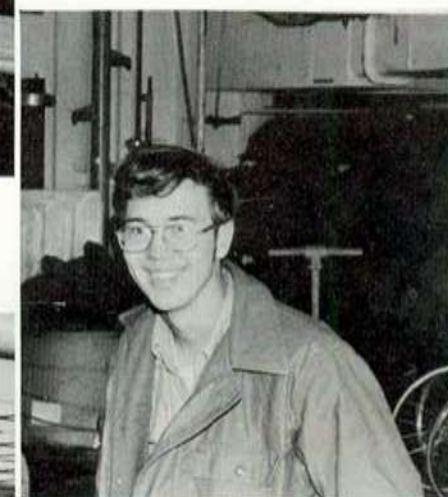
STGSA KRAFT



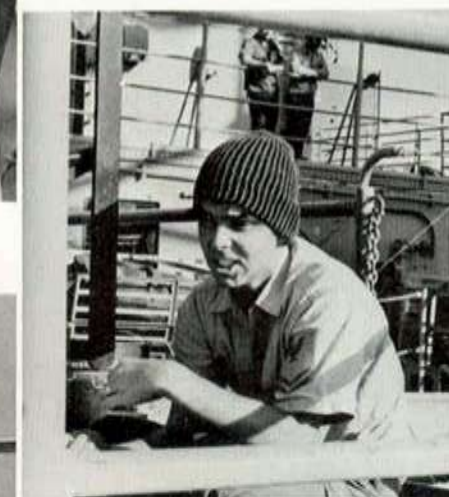
GMG3 McKEE



STG3 PEABODY



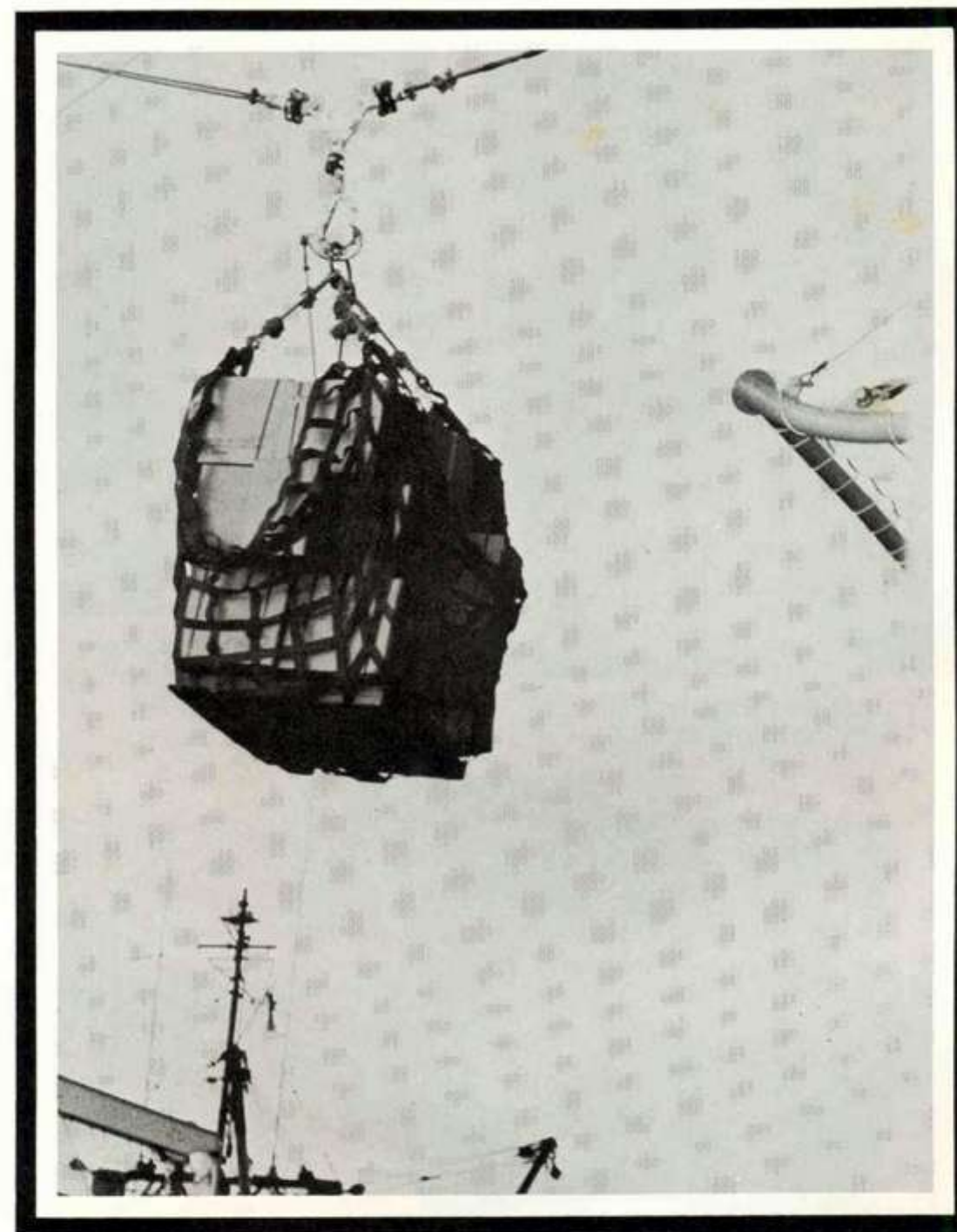
STG3 KOENIG



FTG2 MURRAY



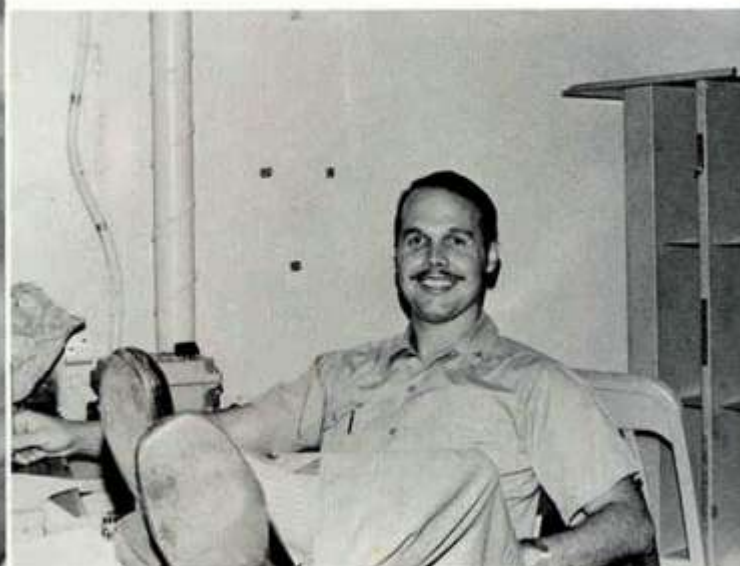
STG2 HOWARD



SUPPLY



LT. A. K. SARANCHOCK
PAST SUPPLY OFFICER



LT. M. J. MILLER
PRESENT SUPPLY OFFICER



LTJG J. H. CARLSON
DISBURSING OFFICER



CSC OLINGER



SKC VALLEJOS



CS1 FLANNIGAN



SD3 GONONG



SK2 CLUCK



DK1 QUIBRANTAR



SA BROWN



SN GARRISON



SH2 BURGETT



SK1 STEPHENS



SH3 DELATORRE



CS3 CAIN



SD2 DIMAL



SH1 MOTT



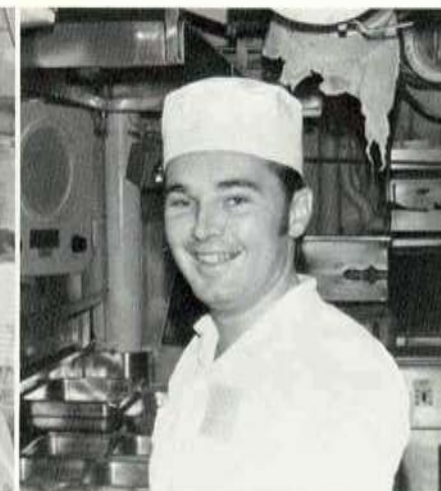
SN EVANS



BTFN HOSKINS



SD1 REYES



CS3 PIERCE



CSSN McBRIDE



SN MAGALLANES



CSSN GELINA



SDSN MENDOZA



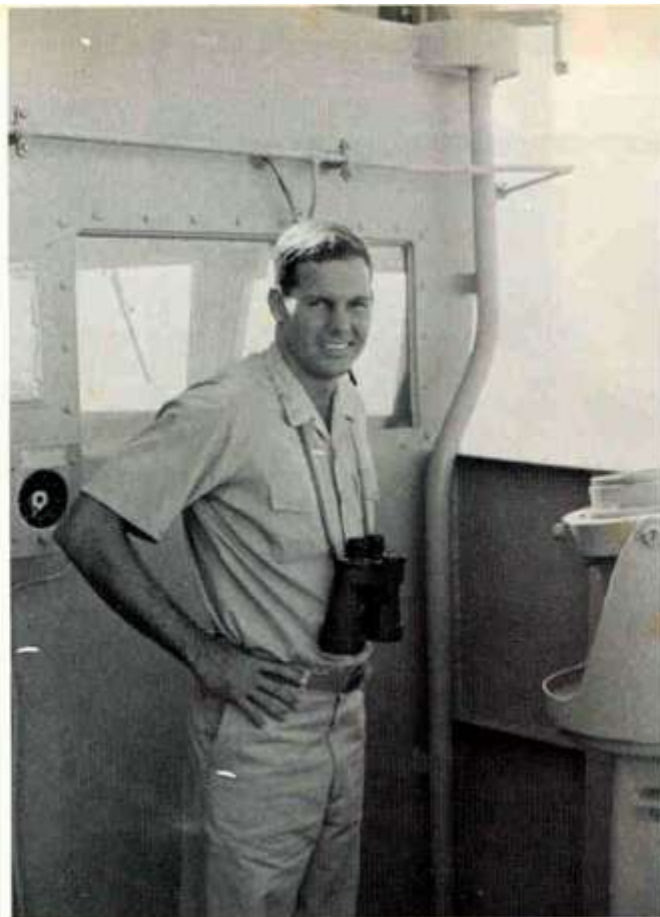
SH2 LYALL



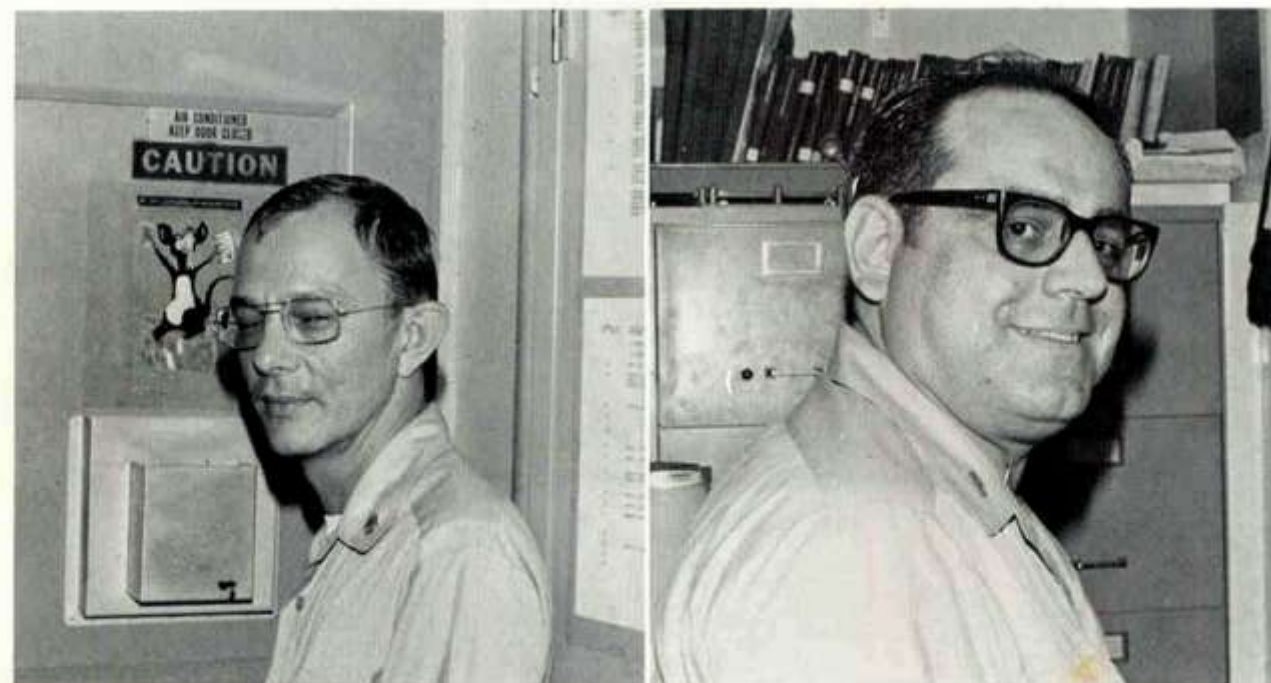
SDSN ROSARIO



13.8	44.71	57.0	18.33.4	44.79	55.6	19.13.5	44.79	54.3	20.05.7	43.67	52.3	20.18.6	43.66	51.7
18.4	44.71	56.7	17.51.7	45.79	55.3	18.32.4	43.66	53.9	19.25.6	44.67	52.0	19.38.7	44.66	51.3
23.8	43.79	56.3	17.10.0	46.89	54.9	17.51.4	44.66	53.5	18.45.8	43.66	51.6	18.59.8	44.66	50.9
29.2	42.86	55.9	16.28.3	47.98	54.5	17.10.4	45.66	53.1	18.05.8	44.66	51.3	18.19.5	45.66	50.5
34.6	41.94	55.5	15.47.1	49.08	54.1	16.29.6	46.67	52.7	17.26.2	45.66	50.9	17.40.1	46.66	50.1
40.0	41.01	55.1	14.65.8	50.18	53.7	15.49.6	47.67	52.4	16.46.8	46.66	50.5	16.59.8	47.66	49.7
45.4	40.09	54.7	13.84.5	51.28	53.3	14.69.4	48.67	52.0	15.67.7	47.66	50.1	16.18.7	48.66	49.3
50.8	39.16	54.3	13.03.2	52.38	52.9	13.89.4	49.68	51.6	14.88.7	48.66	49.7	15.38.7	49.66	48.9
56.2	38.24	53.9	12.21.9	53.48	52.5	13.08.4	50.68	51.2	14.08.7	49.66	49.3	14.58.7	50.66	48.5
61.6	37.31	53.5	11.40.6	54.58	52.1	12.27.4	51.68	50.8	13.28.7	50.66	48.9	13.78.7	51.66	48.1
67.0	36.39	53.1	10.59.3	55.68	51.7	11.46.4	52.68	50.4	12.48.7	51.66	48.5	12.98.7	52.66	47.7
72.4	35.46	52.7	9.78.0	56.78	51.3	10.65.4	53.68	50.0	11.68.7	52.66	48.1	12.18.7	53.66	47.3
77.8	34.54	52.3	8.96.7	57.88	50.9	9.84.4	54.68	49.6	10.88.7	53.66	47.7	11.38.7	54.66	46.9
83.2	33.61	51.9	8.15.4	58.98	50.5	9.03.4	55.68	49.2	10.08.7	54.66	47.3	10.58.7	55.66	46.5
88.6	32.69	51.5	7.34.1	60.08	50.1	8.22.4	56.68	48.8	9.28.7	55.66	46.9	9.78.7	56.66	46.1
94.0	31.76	51.1	6.52.8	61.18	49.7	7.41.4	57.68	48.4	8.48.7	56.66	46.5	8.98.7	57.66	45.7
99.4	30.84	50.7	5.71.5	62.28	49.3	6.60.4	58.68	48.0	7.68.7	57.66	46.1	8.18.7	58.66	45.3
104.8	29.91	50.3	4.90.2	63.38	48.9	5.79.4	59.68	47.6	6.88.7	58.66	45.7	7.38.7	59.66	44.9
110.2	28.98	49.9	4.08.9	64.48	48.5	4.98.4	60.68	47.2	6.08.7	59.66	45.3	6.58.7	60.66	44.5
115.6	28.05	49.5	3.27.6	65.58	48.1	4.17.4	61.68	46.8	5.28.7	60.66	44.9	5.78.7	61.66	44.1
121.0	27.12	49.1	2.46.3	66.68	47.7	3.36.4	62.68	46.4	4.48.7	61.66	44.5	4.98.7	62.66	43.7
126.4	26.20	48.7	1.65.0	67.78	47.3	2.55.4	63.68	46.0	3.68.7	62.66	44.1	4.18.7	63.66	43.3
131.8	25.27	48.3	8.43.7	68.88	46.9	1.74.4	64.68	45.6	2.88.7	63.66	43.7	3.38.7	64.66	42.9
137.2	24.34	47.9	7.62.4	69.98	46.5	9.33.4	65.68	45.2	2.08.7	64.66	43.3	2.58.7	65.66	42.5
142.6	23.42	47.5	6.81.1	71.08	46.1	8.52.4	66.68	44.8	1.28.7	65.66	42.9	1.78.7	66.66	42.1
148.0	22.49	47.1	6.00.0	72.18	45.7	7.71.4	67.68	44.4	4.88.7	66.66	42.5	9.88.7	67.66	41.7
153.4	21.57	46.7	5.18.7	73.28	45.3	6.90.4	68.68	44.0	4.08.7	67.66	42.1	9.08.7	68.66	41.3
158.8	20.64	46.3	4.37.4	74.38	44.9	6.09.4	69.68	43.6	3.28.7	68.66	41.7	8.28.7	69.66	40.9
164.2	19.72	45.9	3.56.1	75.48	44.5	5.28.4	70.68	43.2	2.48.7	69.66	41.3	7.48.7	70.66	40.5
169.6	18.79	45.5	2.74.8	76.58	44.1	4.47.4	71.68	42.8	1.68.7	70.66	40.9	6.68.7	71.66	40.1
175.0	17.87	45.1	1.93.5	77.68	43.7	3.66.4	72.68	42.4	8.88.7	71.66	40.5	5.88.7	72.66	39.7
180.4	16.94	44.7	1.12.2	78.78	43.3	2.85.4	73.68	42.0	8.08.7	72.66	40.1	5.08.7	73.66	39.3
185.8	16.02	44.3	3.31.0	79.88	42.9	2.04.4	74.68	41.6	7.28.7	73.66	39.7	4.28.7	74.66	38.9
191.2	15.10	43.9	2.50.0	80.98	42.5	1.23.4	75.68	41.2	6.48.7	74.66	39.3	3.48.7	75.66	38.5
196.6	14.17	43.5	1.68.7	82.08	42.1	4.42.4	76.68	40.8	5.68.7	75.66	38.9	2.68.7	76.66	38.1
202.0	13.25	43.1	8.87.4	83.18	41.7	3.61.4	77.68	40.4	4.88.7	76.66	38.5	1.88.7	77.66	37.7
207.4	12.32	42.7	8.06.1	84.28	41.3	2.80.4	78.68	40.0	4.08.7	77.66	38.1	1.08.7	78.66	37.3
212.8	11.40	42.3	7.24.8	85.38	40.9	2.00.4	79.68	39.6	3.28.7	78.66	37.7	2.28.7	79.66	36.9
218.2	10.47	41.9	6.43.5	86.48	40.5	1.19.4	80.68	39.2	2.48.7	79.66	37.3	1.48.7	80.66	36.5
223.6	9.55	41.5	5.62.2	87.58	40.1	3.38.4	81.68	38.8	1.68.7	80.66	36.9	6.68.7	81.66	36.1
229.0	8.62	41.1	4.81.0	88.68	39.7	2.57.4	82.68	38.4	8.88.7	81.66	36.5	5.88.7	82.66	35.7
234.4	7.70	40.7	4.00.0	89.78	39.3	1.76.4	83.68	38.0	8.08.7	82.66	36.1	5.08.7	83.66	35.3
239.8	6.77	40.3	3.18.7	90.88	38.9	9.35.4	84.68	37.6	7.28.7	83.66	35.7	4.28.7	84.66	34.9
245.2	5.85	39.9	2.37.4	91.98	38.5	8.54.4	85.68	37.2	6.48.7	84.66	35.3	3.48.7	85.66	34.5
250.6	4.92	39.5	1.56.1	93.08	38.1	7.73.4	86.68	36.8	5.68.7	85.66	34.9	2.68.7	86.66	34.1
256.0	4.00	39.1	7.75.5	94.18	37.7	6.92.4	87.68	36.4	4.88.7	86.66	34.5	1.88.7	87.66	33.7
261.4	3.07	38.7	6.94.2	95.28	37.3	6.11.4	88.68	36.0	4.08.7	87.66	34.1	1.08.7	88.66	33.3
266.8	2.15	38.3	6.12.9	96.38	36.9	5.30.4	89.68	35.6	3.28.7	88.66	33.7	2.28.7	89.66	32.9
272.2	1.22	37.9	5.31.6	97.48	36.5	4.49.4	90.68	35.2	2.48.7	89.66	33.3	1.48.7	90.66	32.5
277.6	3.30	37.5	4.50.3	98.58	36.1	3.68.4	91.68	34.8	1.68.7	90.66	32.9	6.68.7	91.66	32.1
283.0	2.37	37.1	3.69.0	99.68	35.7	2.87.4	92.68	34.4	8.88.7	91.66	32.5	5.88.7	92.66	31.7
288.4	1.45	36.7	2.87.7	100.78	35.3	2.06.4	93.68	34.0	8.08.7	92.66	32.1	5.08.7	93.66	31.3
293.8	5.52	36.3	2.06.4	101.88	34.9	1.25.4	94.68	33.6	7.28.7	93.66	31.7	4.28.7	94.66	30.9
299.2	4.60	35.9	1.25.1	102.98	34.5	4.44.4								



LTJG M. B. FERRIS JR.
NAVIGATOR



YNC ERDMAN

BTC HOKE



HMC AMADIO



QMC ROACH



QMSA MATZELLE



QM2 MORGAN



QM1 LANDRON



PN2 MABRY



PNSN RODRIGUES



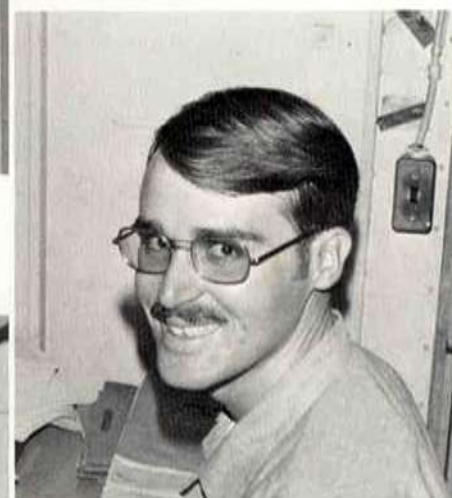
PNSN UMBRIACO



YN3 BARNHILL



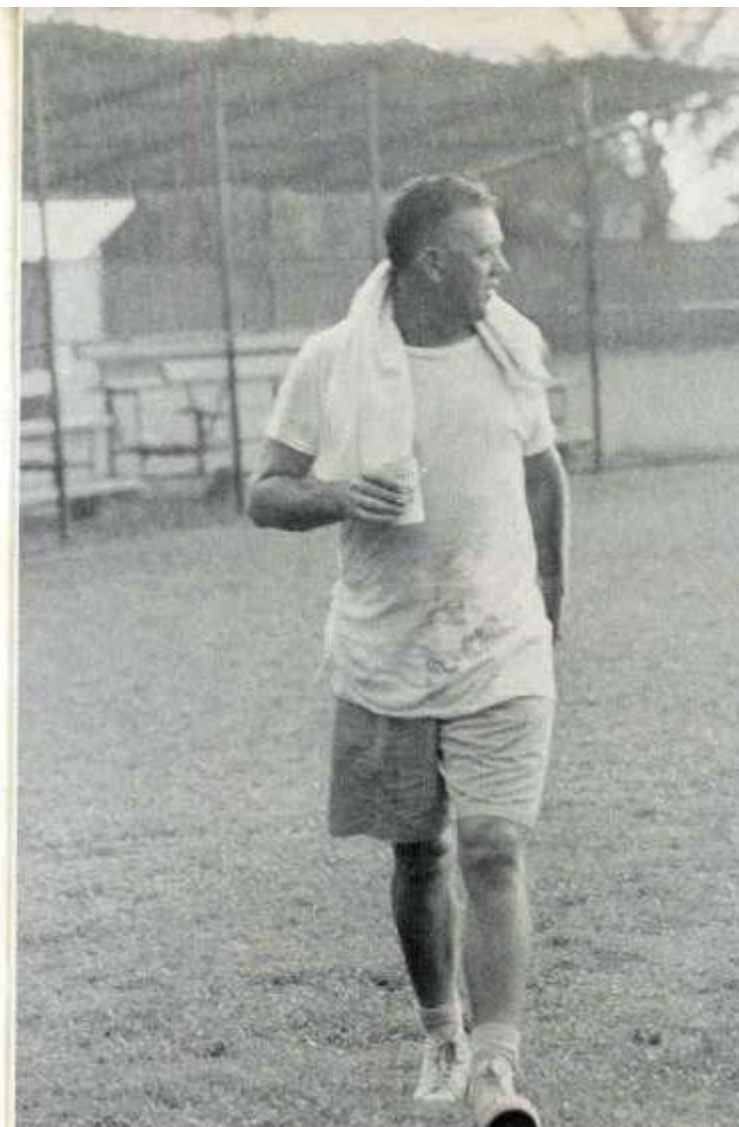
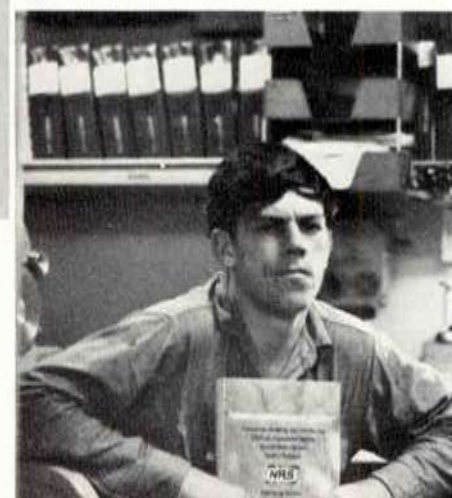
YNSN TAYLOR



YN3 ALLEN



HN DAQUIOAG



DEPENDENT'S CRUISE

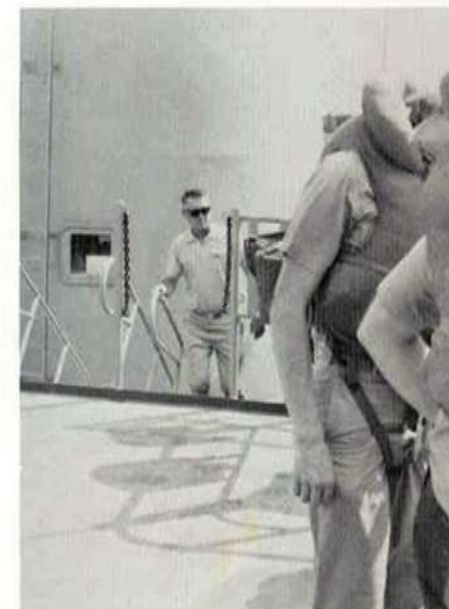
SHORTLY BEFORE THE SHIP'S DEPLOYMENT, WIVES, CHILDREN, GIRLFRIENDS, AND FRIENDS WERE GIVEN A TASTE OF LIFE AT SEA. MOST SPACES OPENED THEIR DOORS FOR INSPECTION AND EXPLANATION TO CURIOUS ONLOOKERS. THE SHIP DEMONSTRATED ALARMS, VARIOUS MANEUVERS, AND A BIG COOKOUT ON THE HELO DECK. AFTER VIEWING DIFFERENT PERSPECTIVES OF DIAMOND HEAD AND BARBER'S POINT, ALL GUESTS SEEMED GLAD TO RETURN TO A "LANDLUBBER" STATUS WITH PERHAPS A FULLER INSIGHT INTO LIFE ON **OUELLET**.



OUELLET DEPLOYS TO THE WESTERN PACIFIC ON MAY 14 AFTER MANY LONG WEEKS OF INTENSIVE TRAINING AND PREPARATION. EACH MAN IS NOW AN INTEGRAL PART OF A TEAM; A TEAM WHOSE MEMBERS MUST CONSTANTLY RELY ONE ANOTHER TO SAFELY GUIDE THEIR SHIP THROUGH HER SECOND TRIP TO THE ORIENT.

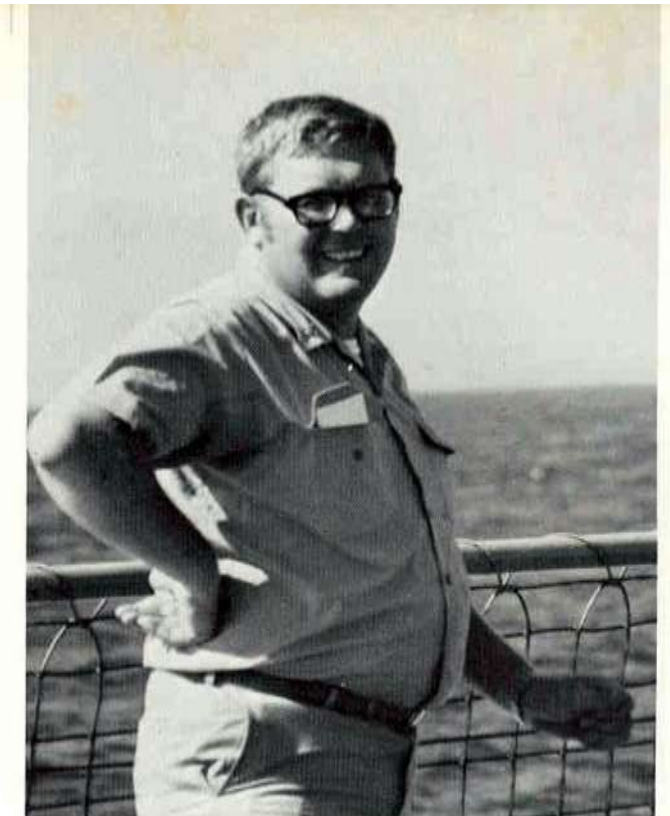


LEAVING FAMILY AND LOVED ONES BEHIND IS THE SAILOR'S GREATEST HEARTACHE. BUT TIME WILL PASS QUICKLY WITH THE NUMEROUS TASKS AND COMMITMENTS THAT THE CREW FACES ON **OUELLET'S** SECOND WESTPAC DEPLOYMENT.



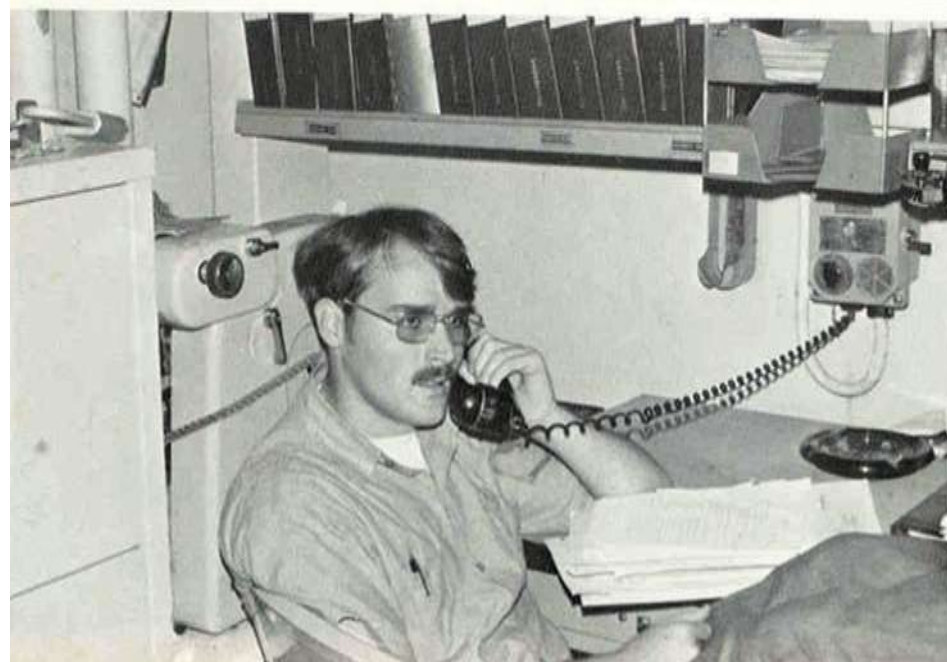
MIDWAY

A BRIEF STOPOVER IN MIDWAY ENABLED THE SHIP TO "TOP-OFF" ITS FUEL TANKS AND TAKE ON EXTRA PROVISIONS. AN EXCHANGE, BEER STAND AND "GOONEY" BIRDS OCCUPIED MOST OF THE CREWMEMBER'S SHORT STAY ON THIS SMALL ISLAND.



YOKUSUKA 24-26 MAY

ON A COLD MAY MORNING, **OUELLET** CAREFULLY NAVIGATED ITS WAY THROUGH TOKYO-WAN HARBOR TO THE SHIP'S ASSIGNED BERTH AT YOKUSUKA, JAPAN. **OUELLET'S** FIRST OVERSEAS PORT CALL WAS A VERY PROFITABLE ONE, IN THE SENSE THAT MANY CREWMEMBERS WERE ABLE TO PURCHASE STEREO EQUIPMENT AND GIFTS AT LOW PRICES. SOME MEN TOOK TRAINS TO YOKOHAMA AND TOKYO BEFORE RETURNING TO THE SHIP, AND GETTING UNDERWAY FOR PORTS IN SOUTHERN JAPAN.





SASEBO 29 May-2 JUNE

FOR THE FIRST TIME IN THE CRUISE, SAILORS HAD THE OPPORTUNITY TO VISIT FAMILIAR PLACES AND RENEW OLD ACQUAINTANCES AS SASEBO WAS A PORT CALL ON **OUELLET'S** FIRST DEPLOYMENT. VARIOUS TOURS, INCLUDING NAGASAKI, PROVIDED MANY ASPECTS OF JAPANESE CULTURE AND SCENERY.

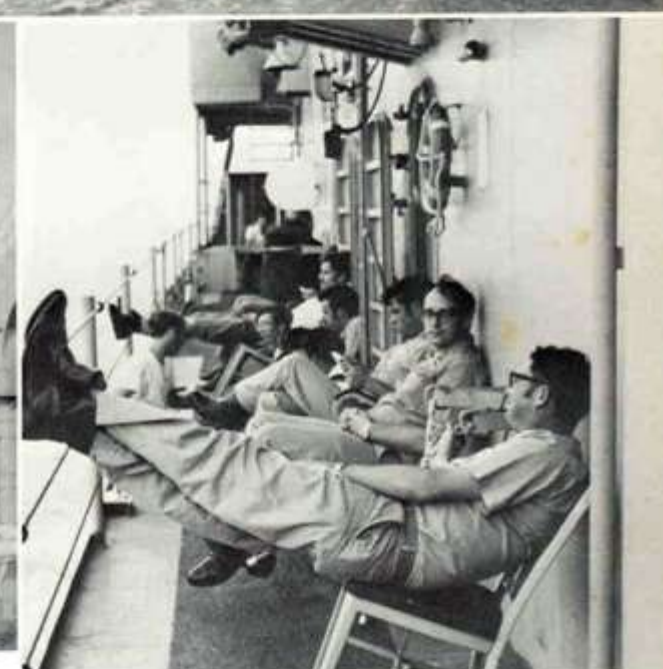
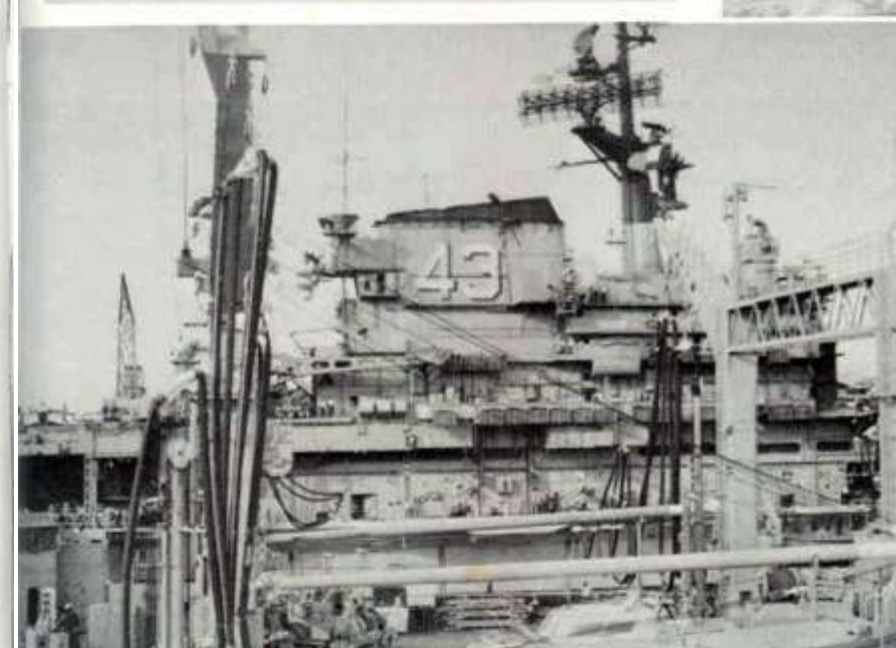
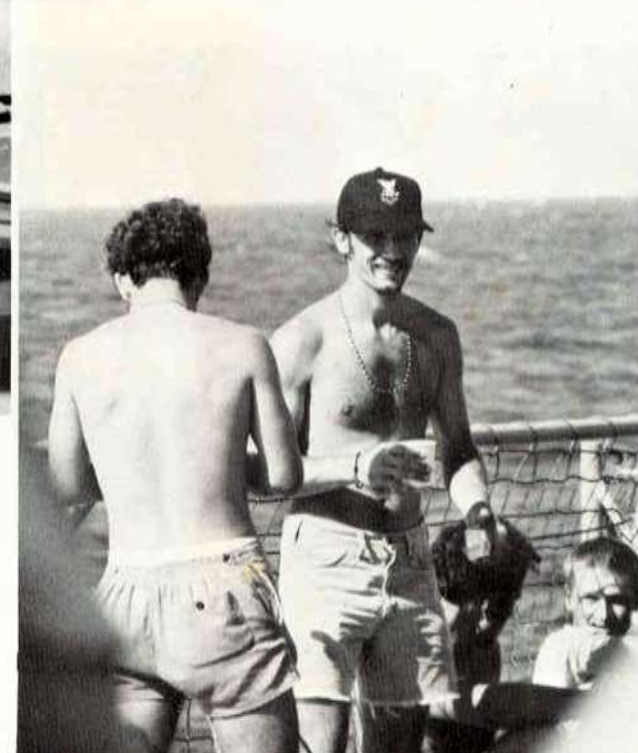


SUBIC BAY 4-7 JUNE

SUBIC BAY, PHILIPPINES OFFERS PROBABLY THE BEST REPAIR FACILITY AND, WHAT IS CONSIDERED BY MOST, THE BEST LIBERTY IN WESTPAC. FROM GOLF COURSES TO THE "EAST END CLUB," THE CREW COULD ALWAYS FIND SOME WAY TO CONSTRUCTIVELY USE THEIR TIME DURING LIBERTY HOURS. ALTHOUGH ENCOUNTERING HOT WEATHER AND HARD WORK, **OUELLET** MEN ALWAYS LOOKED FORWARD TO RETURNING TO THIS WESTPAC PORT WHENEVER THE SHIP PULLED OUT FOR A SCHEDULED LINE PERIOD.

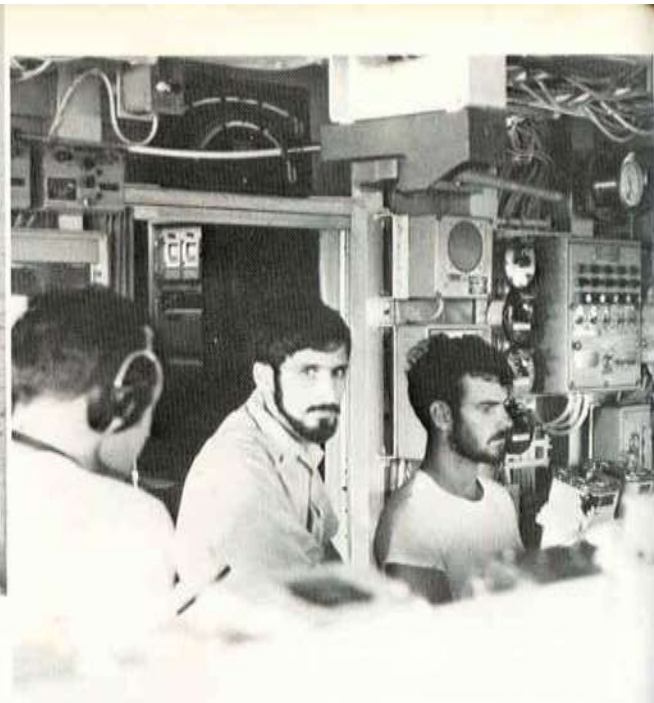
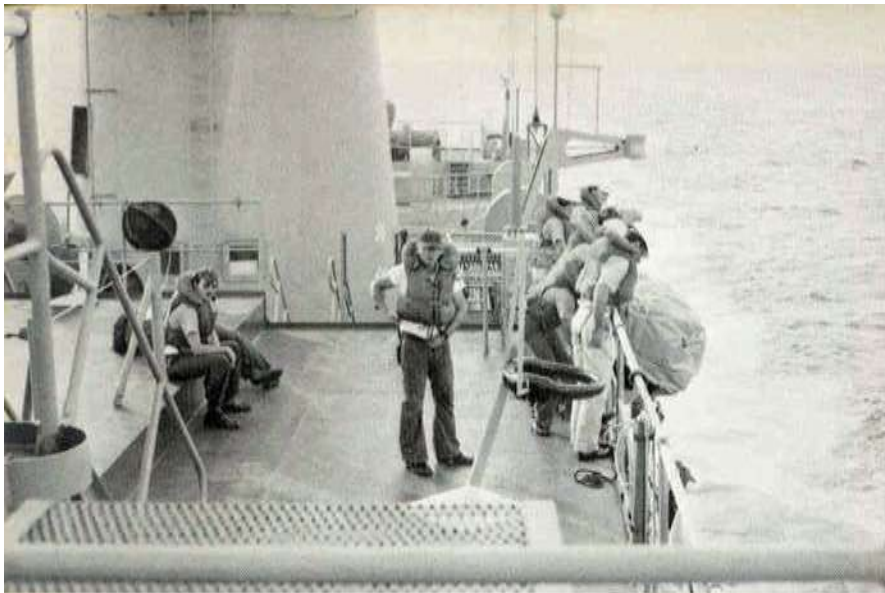


OUELLET MAKES HER FIRST TOUR TO "YANKEE" STATION 9-24 JUNE BEFORE PROCEEDING TO KAOHSIUNG.

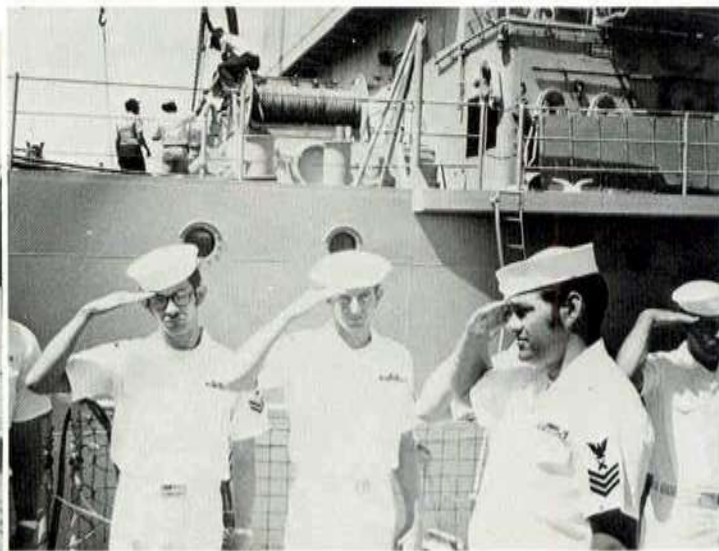
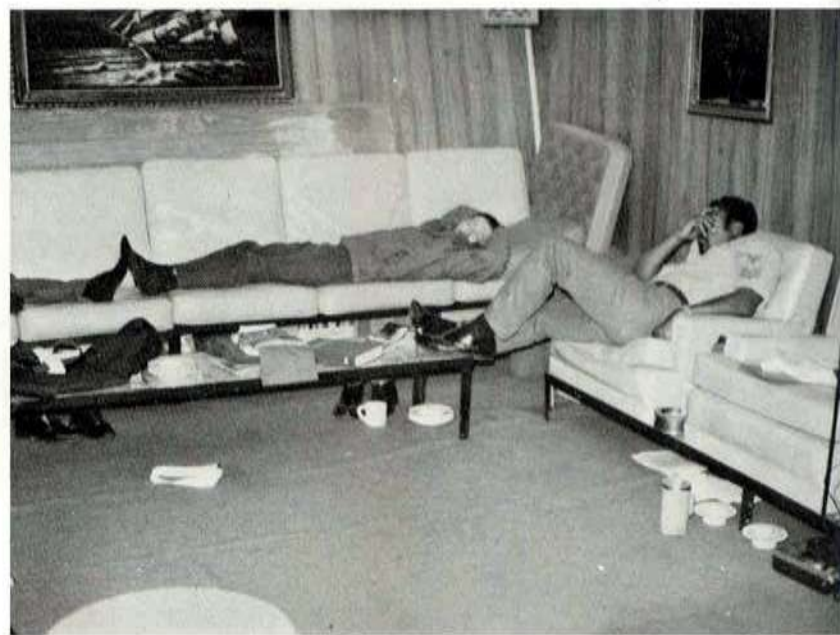


KAOHSIUNG 4-12 JULY

AT KAOHSIUNG, TAIWAN, THE CREW ENCOUNTERED ITS FIRST TASTE OF CHINESE CUSTOM AND FOOD. KAOHSIUNG, THE SECOND BUSIEST SHIPPING PORT IN TAIWAN, WAS ANOTHER FIRST FOR OUELLET AND MANY OF THE CREW. A SHIPBOARD SPORT'S TOURNAMENT, AS WELL AS NUMEROUS DIVISIONAL PARTIES, ADDED TO THE DIVERSITY DURING THE WEEK-LONG INPORT PERIOD.



FROM 15 TO 27 JULY, **OUELLET** SERVED AS A RADAR PICKET SHIP IN THE TONKIN GULF. WATCHES, TRAINING, AND DRILLS OCCUPIED MOST OF THE MEN'S TIME, BUT ALMOST ALL COULD FIND A LITTLE TIME TO THINK ABOUT THREE IMPORTANT THINGS: FAMILY, THE NEXT LIBERTY PORT, AND PAYDAY.

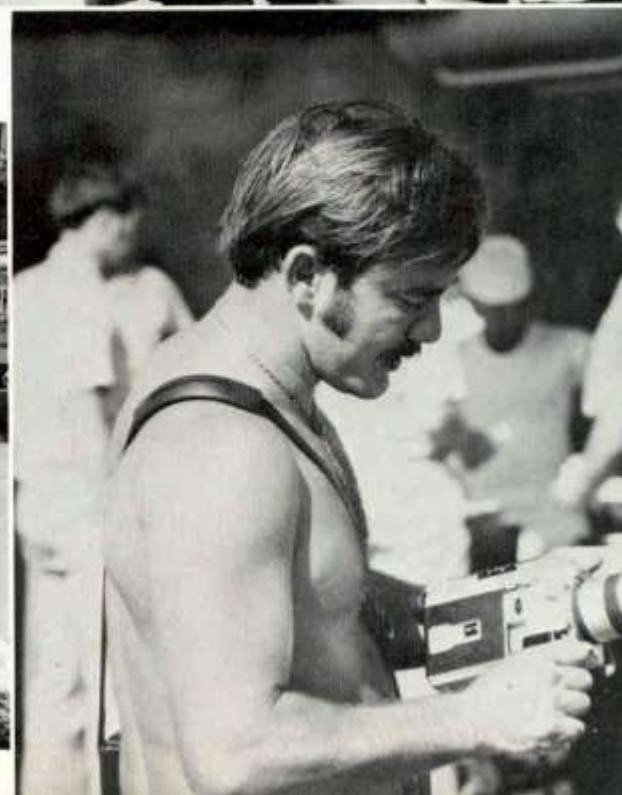
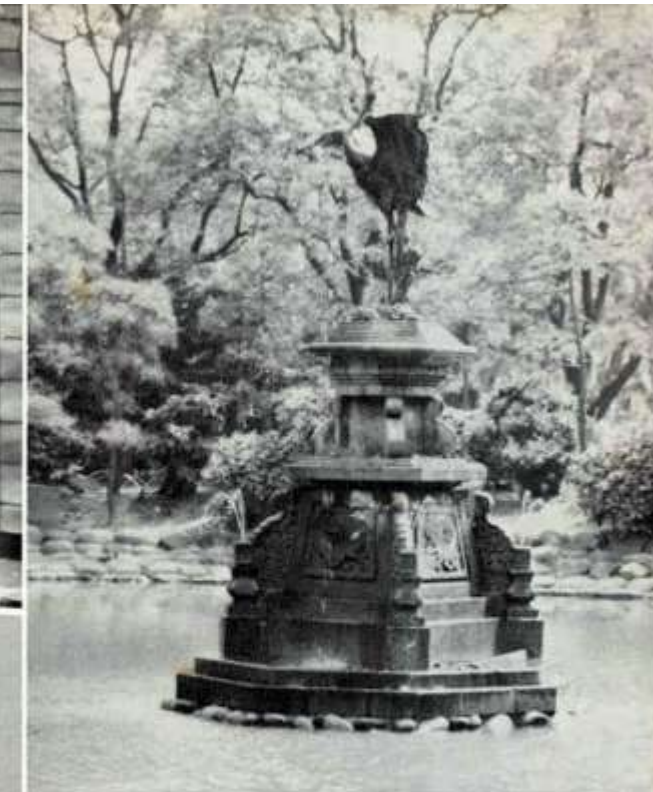


HONG KONG 1-7 AUGUST

THE CONTRAST OF CULTURES, ORIENTAL AND OCCIDENTAL, WERE OMNIPRESENT IN THE BRITISH CROWN COLONY OF HONG KONG. THE PARADOX OF ANTIQUATED HARBOR JUNKS AND SLEEK MERCHANTMEN AND WARSHIPS DIVERSIFIED THE PORT, WHILE TALL BUILDINGS AND WORN SHACKS OPPOSED EACH OTHER IN THE CITY. HONG KONG WAS THE SHOPPING PARADISE, WITH MANY MEN FINDING REAL BARGAINS ON SOME OF THE BACK ROADS, SUCH AS "LADDER STREET." SOME MEN WERE FORTUNATE ENOUGH TO HAVE THEIR WIVES ACCOMPANY THEM TO THIS FAMOUS PORT OF THE ORIENT.



IN MID-AUGUST, **OUELLET** FOUND HERSELF IN THAT "HOME AWAY FROM HOME," SUBIC BAY. DURING THIS PERIOD THE **OUELLET** CREW WORKED WITH THE SHIP REPAIR FACILITY IN ORDER TO IMPROVE THE SHIP'S MATERIAL CONDITION BEFORE RETURNING TO SEA, PROVIDING ESCORT DUTIES FOR THE USS CORAL SEA.

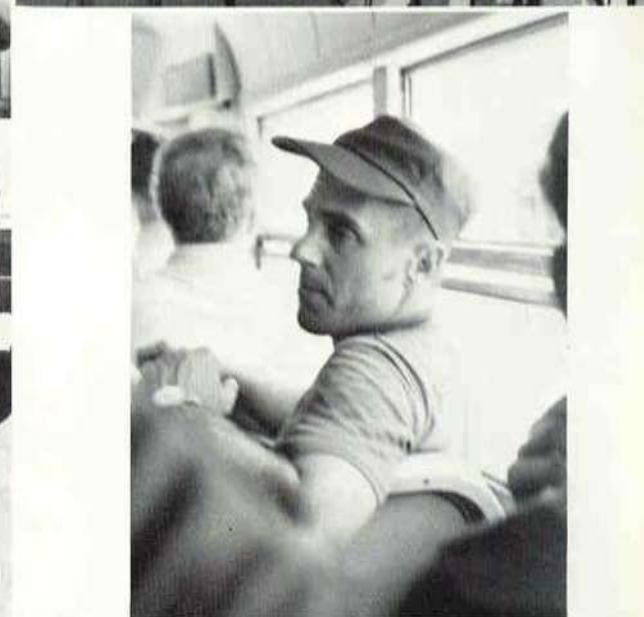
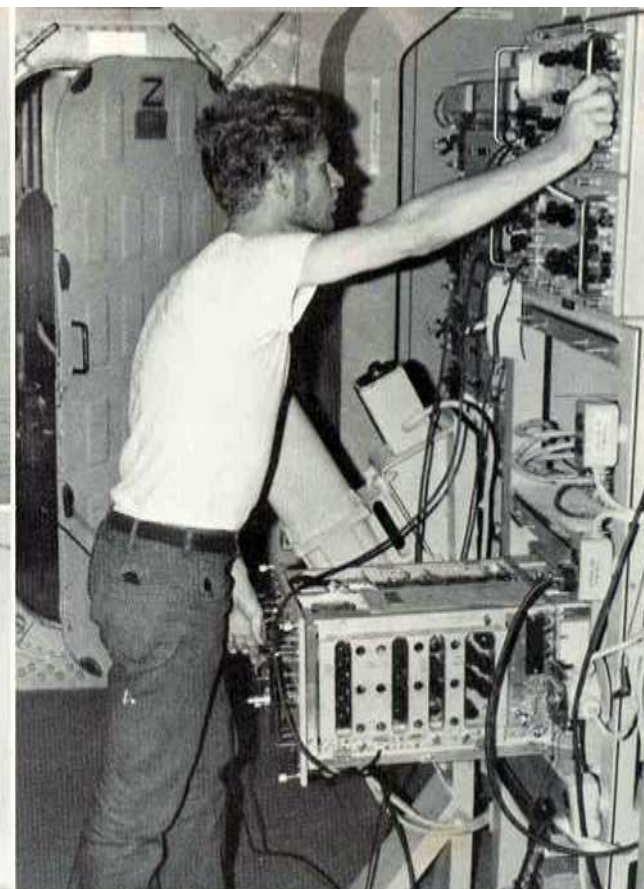
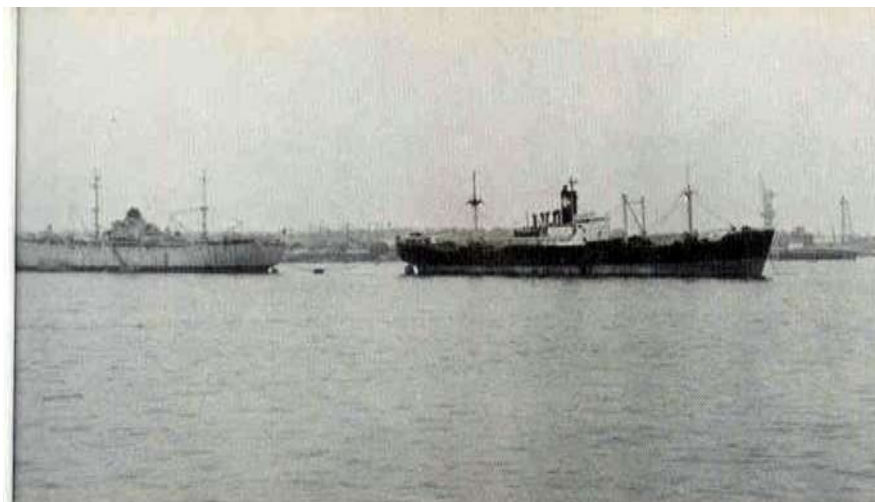
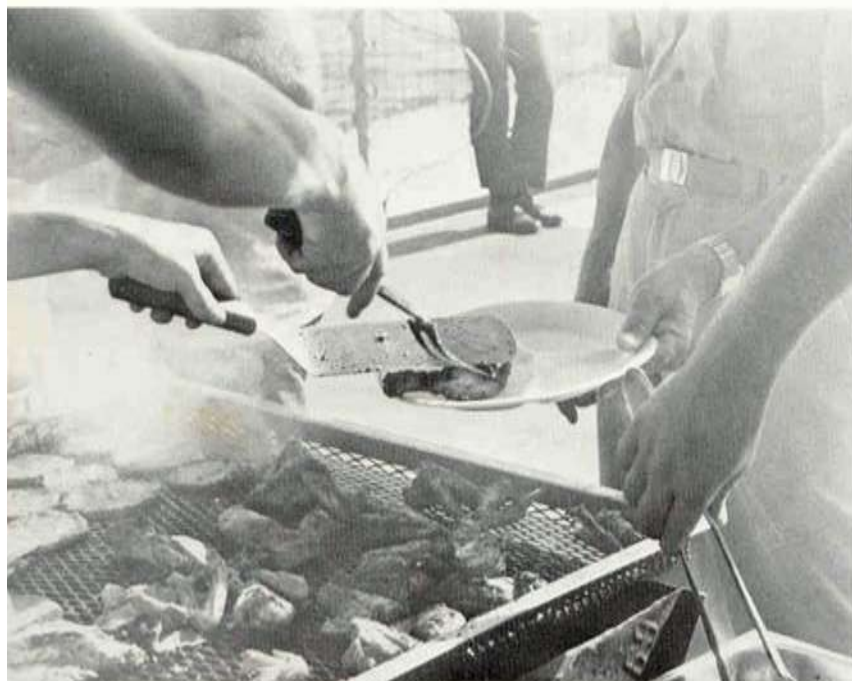


ON 7 SEPTEMBER, **OUELLET** AND CORAL SEA STEAMED TOWARD THE SOUTHERN PART OF THE LUZON ISLANDS. IN STATION AS PLANE GUARD, **OUELLET** WAS ABLE TO VIEW AN IMPRESSIVE AIR SHOW, PROVIDED BY THE FIGHTER SQUADRONS ATTACHED TO THE CORAL SEA. SOON AFTER THE DISPLAY, BOTH SHIPS PROCEEDED TO MANILA FOR SEVERAL DAYS OF WELL DESERVED "RECREATION AND REST". MANILA REVEALED BEAUTIFUL PARKS, EXTENSIVE SHOPPING OPPORTUNITIES, AND A VARIETY OF THINGS TO DO AT NIGHT. **OUELLET** WAS ALSO ABLE TO WITNESS A NATIONAL CELEBRATION IN HONOR OF THE REPUBLIC'S PRESIDENT.



SATTAHIP THAILAND

AFTER A BRIEF STOP FOR FUEL IN SUBIC BAY, **OUELLET** STEAMED ACROSS THE SOUTH CHINA SEA TO THE GULF OF THAILAND FOR A VISIT TO THE SMALL DEEP-WATER PORT OF SATTAHIP. ALTHOUGH THE INPORT PERIOD WAS ONLY FOUR DAYS IN LENGTH EACH MAN WAS AFFORDED THE OPPORTUNITY TO TRAVEL TO THE COUNTRY'S LARGEST CITY, BANGKOK. NO ONE REGRETTED THE VISIT TO THIS COLORFUL CITY, EXPERIENCING THE THAI WAY OF LIFE. FROM THAI BOXING TO THE KING'S PALACE, SIAMESE CULTURE PROVED TO BE VERY INTERESTING. ON SEPTEMBER 24, **OUELLET** RETURNED TO THE TONKIN GULF, ASSUMING PIRAZ DUTIES.



DRYDOCKING AND CHANGE OF COMMAND

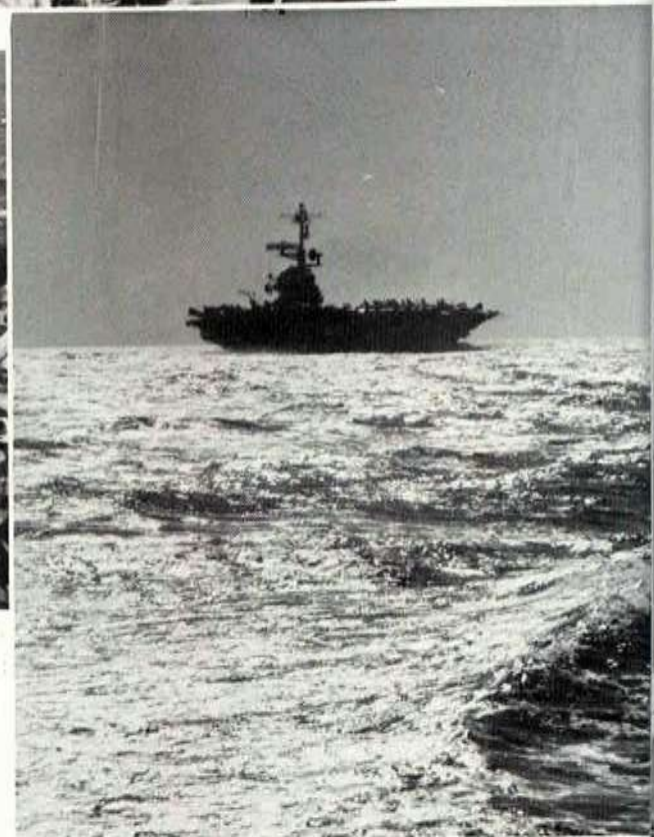
OUELLET WAS PLACED IN ONE OF THE TWO FLOATING DRYDOCKS LOCATED IN SUBIC BAY DURING THE EARLY PART OF OCTOBER. THE SHIP REPAIR FACILITY SANDBLASTED AND PAINTED THE ENTIRE HULL. RESTING HIGH ON KEEL BLOCKS, THE SHIP'S HULL WAS INSPECTED BY ALL, AND MOST WERE AMAZED BY THE SIZE OF THE SONAR DOME AND FIVE-BLADED SCREW THAT PROPELLES THE 4100-TON DESTROYER ESCORT THROUGH THE WATER. WHILE IN DRYDOCK, ON 16 OCTOBER, CREWMEMBERS WATCHED THE CHANGE-OF-COMMAND AS THE THIRD CAPTAIN OF **OUELLET** ASSUMED HIS DUTIES. A SOMBER AND CROWDED MESS-DECKS PROVIDED THE SETTING AS CDR. JOHN BAUMGARDNER PASSED ON HIS DUTIES TO CDR. DANIEL C. RICHARDSON.



Commander Daniel C. RICHARDSON, a native of Pueblo, Colorado, graduated from the U. S. Naval Academy in June 1959. He served as an instructor at the U. S. Naval Academy prior to reporting to Pensacola, Florida for flight training in 1959. After being designated a naval aviator in 1961 Commander RICHARDSON served in attack squadrons VA-42 and VA-135. At his request and after instruction at the U. S. Submarine School at New London, Connecticut, Commander RICHARDSON served on board the Regulus Missile

Submarine **USS BARBERO (SSG 317)**. His next tour was on board **USS BLUEBACK (SS 581)** for two years during which time he qualified for command of submarines. His next tour was assignment to Commander Submarine Force, U. S. Pacific Fleet as a SSBN watch Officer and later as the Assistant Force Operations Officer. Commander RICHARDSON's last two tours have been assignment as Executive Officer **USS BLUEBACK (SS 581)** and Executive Officer **USS REEVES (DLG 24)**

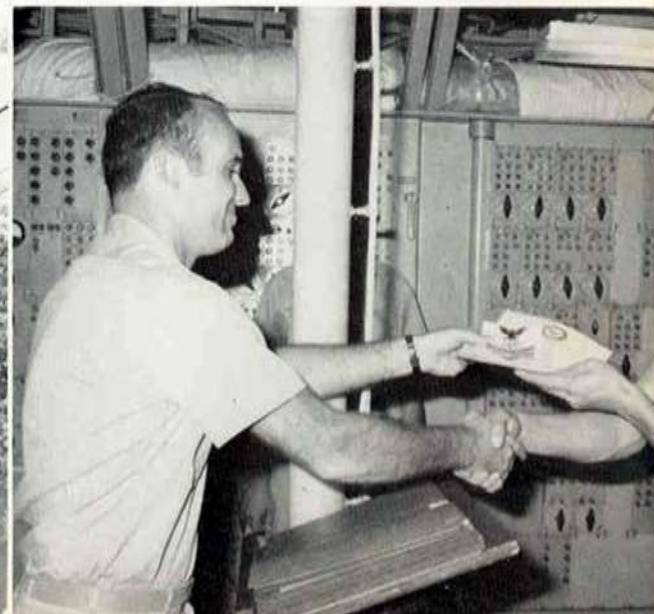
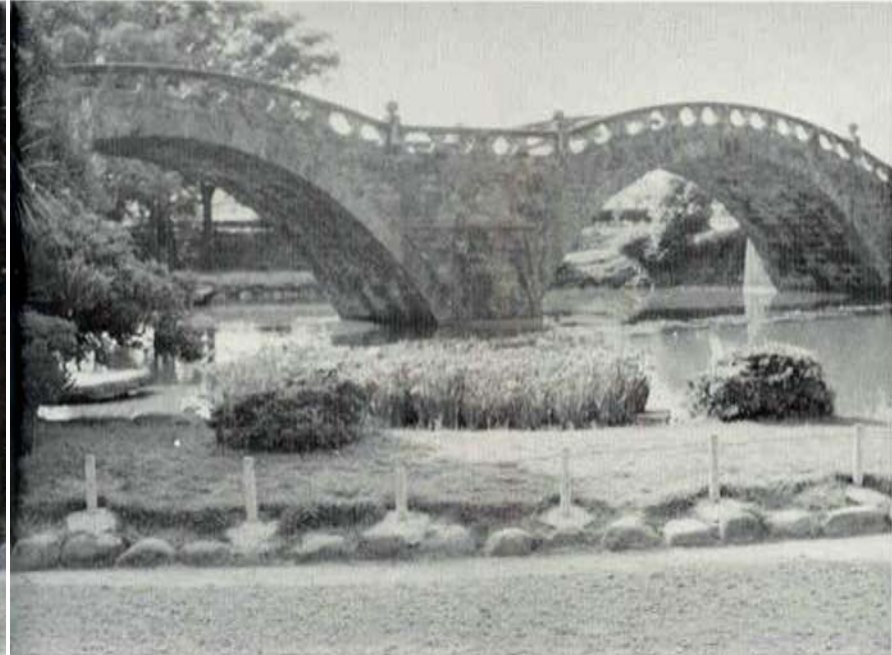
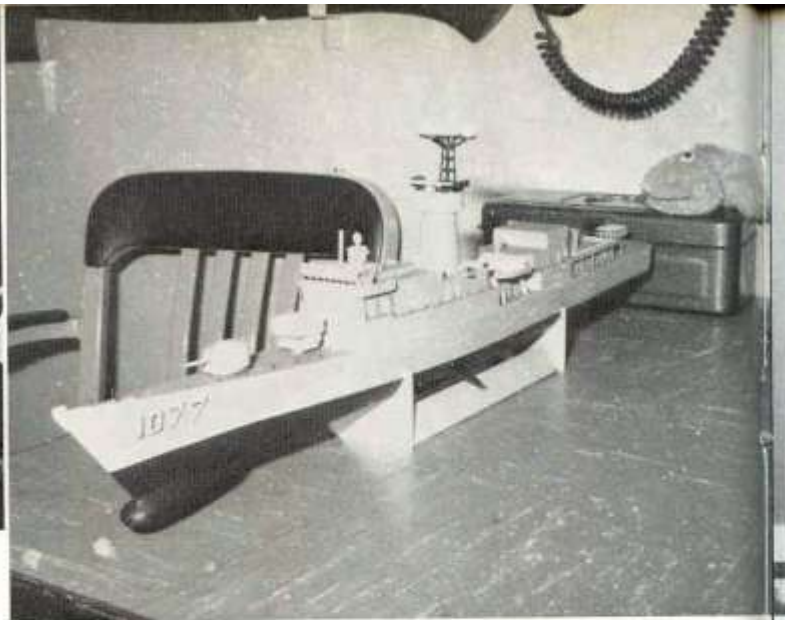
UPON COMPLETION OF DRYDOCK ACTIVITIES, **OUELLET** HEADED BACK TO THE GULF OF TONKIN FOR THE LAST THREE-WEEK LINE PERIOD, 28 OCTOBER to 19 NOVEMBER. FROM THERE, THE SHIP PROCEEDED TO SUBIC BAY FOR A FINAL UPKEEP IN PREPARATION TO VISIT SASEBO, JAPAN AND THEN RETURN HOME.

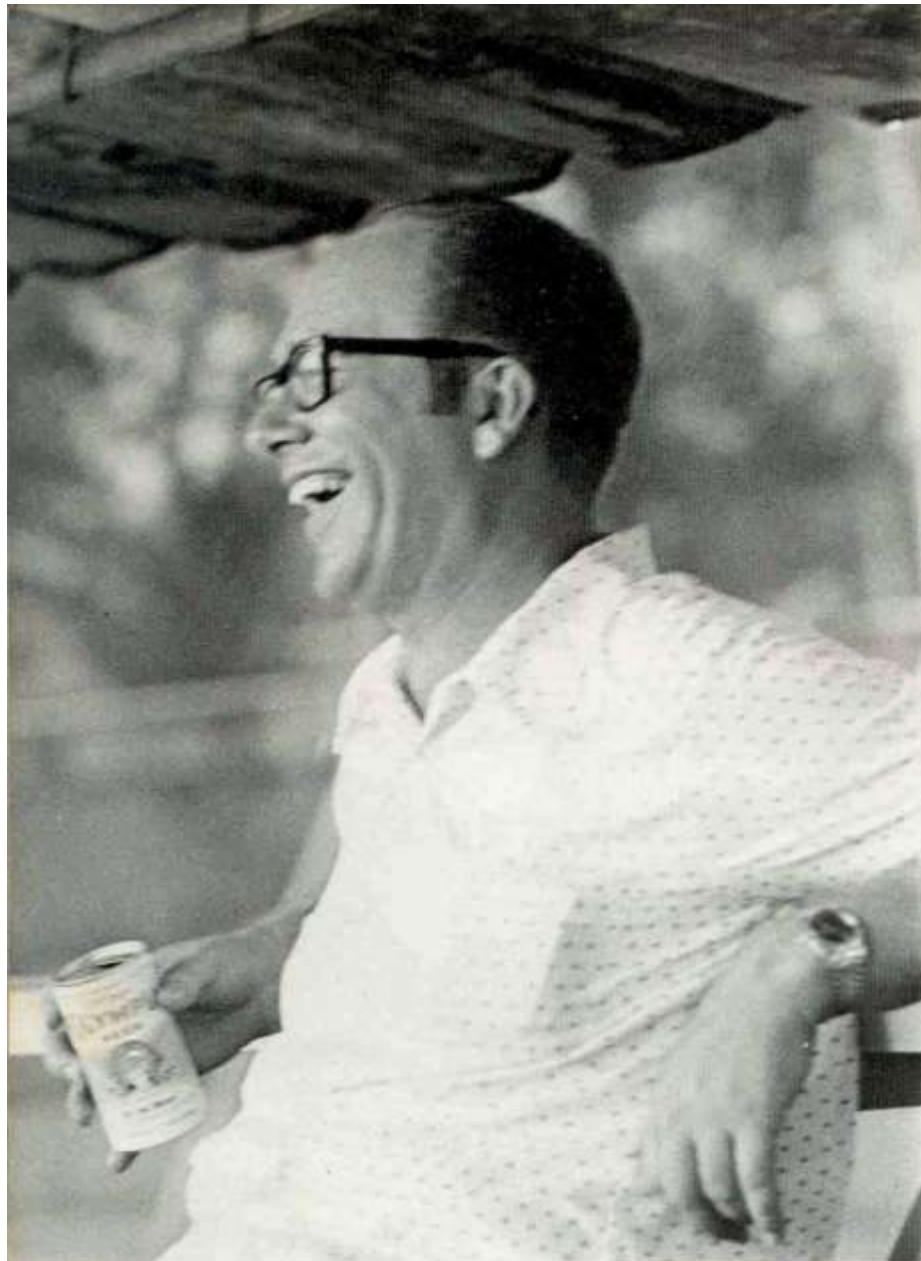


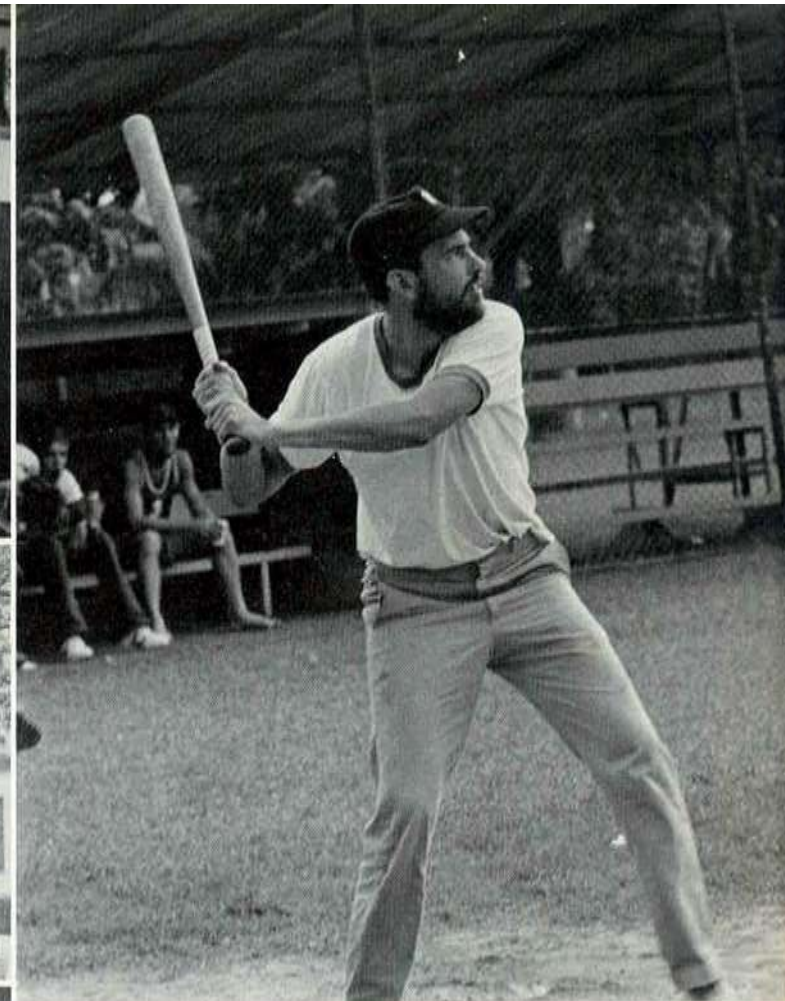
RETURNING HOME

SAYING "PAALAM" TO THE PHILIPPINES FOR THE LAST TIME, **OUELLET** MADE THE TRANSIT TO SASEBO, JAPAN ONCE AGAIN FOR A TEN-DAY TENDER AVAILABILITY PERIOD. ALL EFFORTS WERE MADE DURING THIS UPKEEP TIME IN PREPARATION FOR RETURNING TO PEARL HARBOR. ON THE MORNING OF NOVEMBER 24, **OUELLET** SMARTLY MANEUVERED OUT OF SASEBO-WAN, STEERING A COURSE FOR GUAM, THEN THE LONG TRANSIT TO MIDWAY AND FINALLY HOME.











THE UNQUESTIONING OBEDIENCE, THE SENSE OF DUTY, THE METHODICAL HABITS OF AN UNVARYING ROUTINE, THE RESTRICTION WHEN AFLOAT TO A SOCIETY EVERY MEMBER OF WHICH IS CAST IN THE SAME WORLD, NECESSARILY SETS AN IRON IMPRESS UPON THE CHARACTER OF THE NAVAL MAN, AND MAKES HIM THE PATTERN OF CONSERVATION WHICH HE IS.

—CAPTAIN FRENCH E. CHADWICK 1902

TOP O' THE MACK 1973

EDITOR LTJG M. B. FERRIS JR.
ENS B. D. BROWN
PHOTOGRAPHY LTJG M. B. FERRIS JR.
DESIGN LAYOUT ENS. B. D. BROWN

ACKNOWLEDGEMENTS: LT and MRS. D. F. RUSSELL
LTJG HEMPHILL
LTJG HAMMOND
ENS CANDALOR
STG2 SEDGWICK
YN3 ALLEN

